

The Synergos Institute

National Directory of Civil Society Resource Organizations: Thailand

Series on Foundation Building
In Southeast Asia
2002

Table of Contents

Preface.....	2	The National Council of Women of Thailand (Under the Royal Patronage of Her Majesty The Queen).....	25
Civil Society Resource Organizations in Thailand		Association of Physically Handicapped of Thailand.....	26
The Thai Context.....	4	TISCO Foundation.....	27
Methodology.....	4	Tai Wisdom Association.....	28
Summary of Findings		Foundation for Thailand's Rural Restructuring Movement (Under Royal Patronage).....	29
Types of Founders.....	6	Thai Environment and Community Development Association... ..	30
Distribution of Support.....	7	Population and Communities Development Association.....	31
Primacy of Providing Financial Support.....	8	Thai-German Development Foundation.....	33
Distribution of Funds.....	8	National Council for Child and Youth Development.....	34
CSRO Program Areas.....	9	Urban Community Foundation.....	35
Communication Method.....	10	The Development Cooperation Foundation.....	36
CSRO Expenditures.....	10	Siam Cement Foundation.....	37
CSRO Revenue: Domestic.....	12	Toyota Thailand Foundation.....	39
CSRO Revenue: International.....	13	Thai-Rath Newspaper Foundation.....	40
Endowment.....	14	Foundation for Rural Child Development.....	41
Size of Donations.....	15	NGO Coordinating Committee on Development.....	43
Number of CSRO Staff and Volunteers.....	16	Empower Foundation.....	44
Conclusions.....	17	Children's Foundation.....	46
Directory of Civil Society Resource Organizations in Thailand		Dr. Sem Foundation.....	47
Thai NGO Coalition on AIDS (TNCA).....	19	Seub Nakasathien Foundation.....	59
National Council of Social Welfare of Thailand (Under Royal Patronage)...	20	Development Support Consortium... ..	50
Development of Traditional Medicine Foundation.....	21	The Education for Development Foundation (EDF).....	51
Foundation for Women.....	22	Local Development Institute (LDI)....	53
Foundation for Agricultural and Rural Development.....	23	Kenan Institute Asia.....	54
AIDSNET Foundation.....	24		

Preface

Purpose of the Study

In Africa, Asia and Latin America, citizen participation has become a growing and vital force for social change. Through donations of time, energy, materials, and money, civil society organizations have brought significant material and human resources from the community level to bear on problems of poverty. Increasingly, locally managed and controlled organizations that mobilize financial resources and transfer funds to civil society organizations have been established to facilitate just this kind of community action.

While the number of such organizations remains small in these regions of the world, they are helping to support, strengthen and sustain thousands of small and large civil society organizations (CSOs). General consensus over the terminology for such organizations has not yet been reached, though they are often referred to as “foundations” or “community development foundations” in recognition of the role they have in common with foundations of the U.S., Canada and parts of Europe. In Asia, the term “civil society resource organization” – or CSRO – is frequently used. For the purposes of this directory of organizations in Thailand, we have chosen to use this term to describe the general group of organizations contained within.

The growing universe of CSROs in Asia is only beginning to be systematically studied. In discussion with CSROs in Thailand, Indonesia and the Philippines, Synergos decided to map the emerging role of foundations in strengthening civil

society with the aim to better answer questions such as: how are these organizations created; how do they develop and evolve; and how can they sustain themselves as philanthropic entities?

In Thailand, the activity of CSROs is little known. It is our hope that this directory will shed much light on the nature of these unique organizations and the very critical role they are beginning to play in Thai civil society. It is one of a set of three directories. The other two were prepared for the Philippines and Indonesia. An online version of this directory is at www.synergos.org. It is our hope that CSROs in Thailand will access this database; notify Synergos of updated information regularly; and that new CSROs will reach out to Synergos to be included in the online directory too. In so doing, interested groups will be able to monitor the growth and development of the sector¹.

We anticipate that it will also serve as a tool to measure the growth of civil society in Thailand and as a basic source of information for those interested in the CSRO sector including staff and boards of CSROs, domestic and foreign donors (private and public), grant seekers, and academics.

Synergos gratefully acknowledges the financial support of the Sasakawa Peace Foundation, Ford Foundation

¹ As some CSROs have submitted updated data, the information presented in the directory may pertain to different periods or years. The data used for the proceeding analysis, however, is from the same year.

and the contribution of the Program Advisory Committee (Peter Geithner, M.S. Kismadi, Nafsiah Mboi, Rajesh Tandon, Aurora Tolentino, Paiboon Wattanasiritham, and Tadashi Yamamoto). Editing was done by Natasha Amott, John Heller and Wannasiri Weerasampan of Synergos.

Civil Society Resource Organizations

While CSROs share many characteristics with the typical grantmaking foundation of North America, they have also developed programs and policies in ways that are unique to their own enabling environment and traditions of giving. For example, they are more likely to mix program operation with grantmaking than might be found in American or Canadian foundations. They may also pursue more loan making. Few of them were created with a single large endowment, as was the case with most private foundations of the U.S. In fact, most of them rely on a wide range of strategies to mobilize financial resources including earned income, contributions from

individuals and corporations, and grants from international organizations. Building an endowment may still be many years away for most of these CSROs.

While a broad array of strategies and activities are applied by CSROs in Southeast Asia and elsewhere in the world, we can say that these organizations tend to be:

- ❑ Locally owned, governed and operated
- ❑ Private and nongovernmental
- ❑ Independent and nonprofit (although they may earn income which they use to fund their programs)
- ❑ Have a mission that contributes to the participation of civil society in addressing development problems
- ❑ Mobilize resources from within or outside their countries and pass them on to other civil society groups via grants or other financing mechanisms.

Civil Society Resource Organizations in Thailand

The Thai Context

While civil society and philanthropy could be viewed as having a long history in Thailand, its roots lie largely in beliefs that one has moral and civic responsibilities to give and share what one has, particularly to those seen to be suffering. Most often, this has been realized by giving donations to temples or public charities such as the Thai Red Cross. These organizations in turn have very targeted audiences.

By contrast, civil society resource organizations (CSROs) have a relatively short history in Thailand. In the 1960s and 1970s, there were only two CSROs: the National Council of Women and the National Council on Social Welfare of Thailand. Since the early 1980s, however, the number of CSROs has grown in conjunction with a growing appreciation of the role of civil society in general by the Thai public.

A critical issue in both the development and growth of these CSROs is undoubtedly their capacity to raise funds to support their operations and grant and/or loan making activity. Up until now, CSROs have largely been supported through funds from outside of Thailand. Conditions are changing, however, and CSROs now need to receive funding from inside Thailand as foreign resources are increasingly running scarce. Indeed, securing sustainability in finances is the major issue facing the CSRO community in Thailand. CSROs are now attempting to strike a careful balance between raising critically needed funds for their operations on the one hand and developing innovative and strategic

responses to issues facing communities in the country on the other.

Methodology

This directory builds on an earlier study published in 1998 called *Civil Society Resource Organizations and Development in Asia: The Case of Thailand*, by Dr. Amara Pongsapit of Chulalongkorn University. It updates the organizational profiles of fourteen organizations contained in this previous study and adds information on additional organizations.

The CSRO characteristics cited previously were the basis for selecting organizations to receive a standard questionnaire. Offices or branches maintained by international NGOs, foreign foundations or other donor agencies are excluded from this study in order to capture only indigenous CSROs. While some of these CSROs might have received initial or even regular support from international donor agencies, they are considered indigenous by virtue of not being controlled by the international donor agency. Organizations included in this directory are neither commercial (i.e. not distributing profits or surplus to owners, directors or members) nor part of the governmental system. Organizations that receive most (or even all) of their resources from either the business sector or the government, however, are included as long as they are privately constituted and self-governed.

The survey was conducted from January to September 2000 and sent by post, fax, email, or was hand-

delivered. All respondents were interviewed and data validated through senior officers or executive directors/presidents of the organizations. A total of 30 CSROs are included in the study. While most

are located in Bangkok, two are located in Chiangmai, one in the Northeastern part of Thailand, one in Samutprakarn, and one in Nakornpatom.

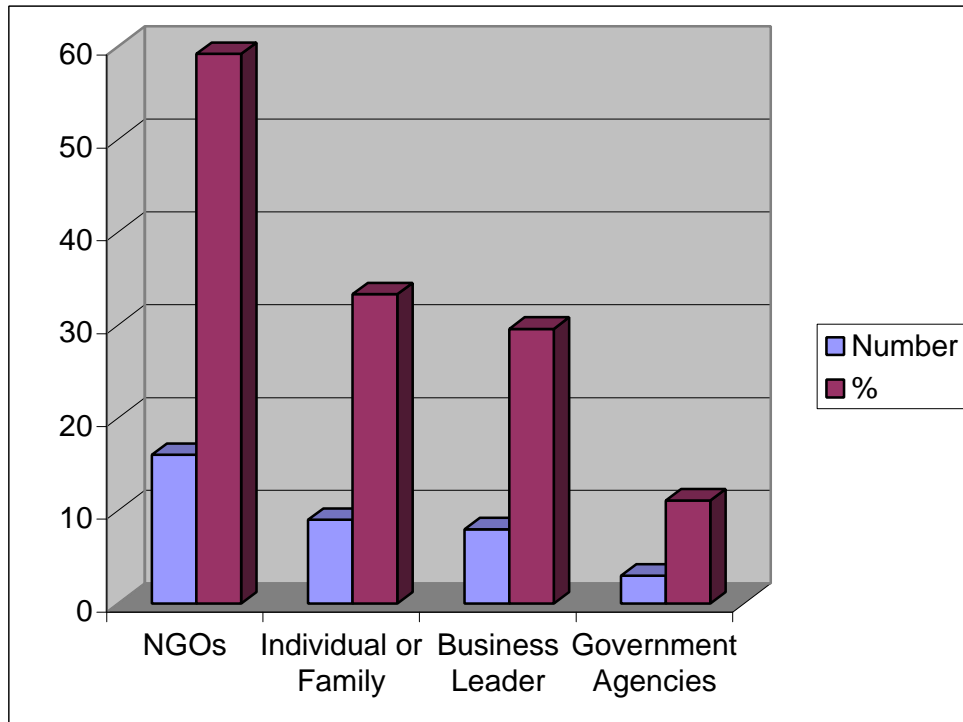
Summary of Findings

Types of Founders

The findings revealed that 16 of the organizations were founded by NGO

leaders, 9 by individual families, 8 by business leaders, and 3 by government agencies.

Figure 1: Types of Founders of Civil Society (more than one answer possible)

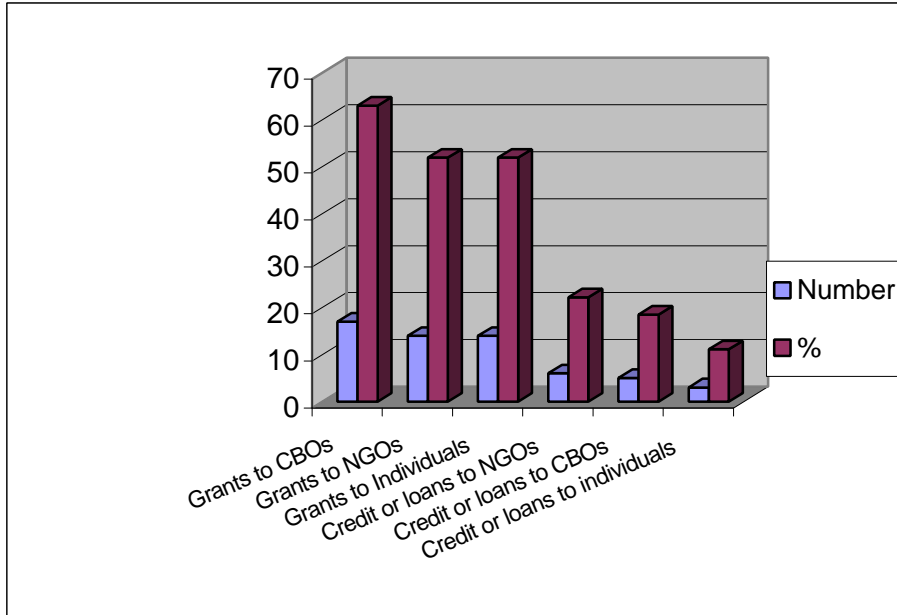


Distribution of Support

CSROs in Thailand do not function as only grantmaking organizations. For many, fund provision is not their main activity. In other words, CSROs are both grantmaking and operational. In regard to the granting of financial aid to other organizations, 17

organizations in the study (63%) provide financial support to community organizations: 14 to NGOs and 14 to individuals. Six (22.2%) extend credit or loans to NGOs, five (18.5%) to community organizations, and three (11.1%) to individuals.

Figure 2: Distribution of financial aid provided



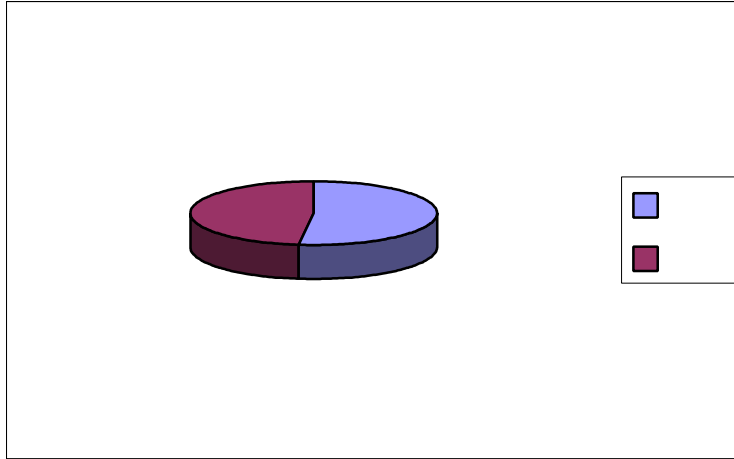
Note: CBOs stands for Community Based Organizations.

Primacy of Providing Financial Support

When asked whether grantmaking or credit extension was a primary

function of the organization, 51.9 percent reported that it was; the remaining reported that it was not.

Figure 3: Primacy of providing financial support

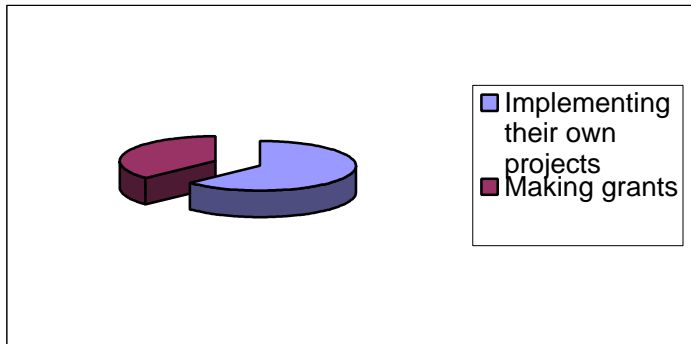


Distribution of Funds

CSROs in Thailand usually spend money on their own projects rather

than financially support or provide grants to NGOs or other community organizations (see Figure 4).

Figure 4: Distribution of funds

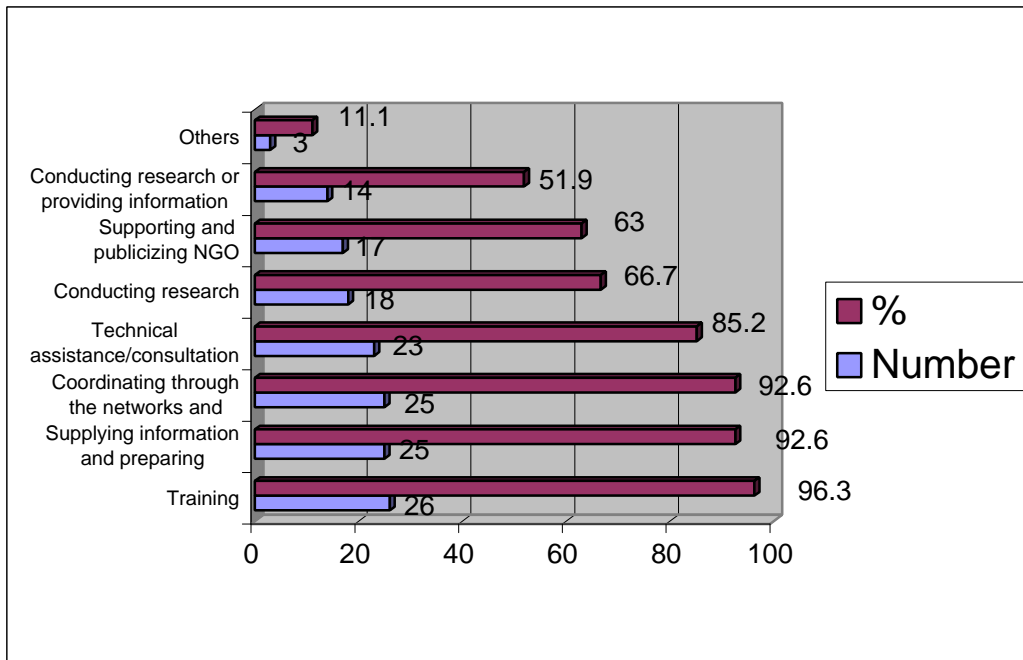


CSRO Program Areas

The research reveals that apart from giving financial support to other organizations, CSROs in Thailand offer other services. The most popular service offered is training, followed by information services and then conducting research or preparing documents for other development organizations. These activities are coordinated through networks or

coordinated with the activities of NGOs. 85.2% provide technical assistance or give advice to other organizations. 66.7% help conduct research and disseminate information to government or international organizations. 63% help publicize NGO activities. 51.9% conduct research or supply information to NGOs and community organizations.

Figure 5: Programs and activities of CSROs

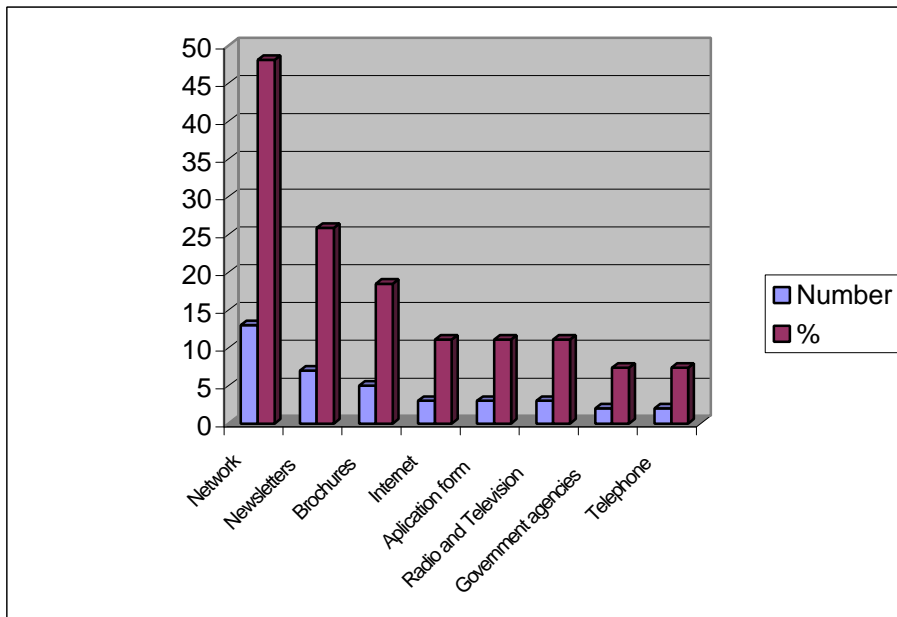


Communication Method

CSROs use various methods to inform potential grantees of funding opportunities. The most popular method is through the network of member organizations (48.1%). Other methods include newsletters (18.5%),

the internet (11.1%), application form delivery (11.1%), and radio and television programs (11.1%). The least popular method is through government agencies (7.4%) and telephone (7.4%).

Figure 6: Methods of informing grantees of funding opportunities



CSRO Expenditures

CSROs indicated their expenditures according to the following four major areas:

1. Grants to organizations and/or individuals
2. Loans to organizations or individuals
3. Operational costs i.e. programs operational costs
4. Management cost i.e. office expenditures and salary

The results are shown in Table 1.

Table 1: Percentage of funds allocated to major expenditures

Foundation/Association	Expenditures					
	Grants	Loans	Operation Costs	Manage. Costs	Others	Total
Woman's Foundation	78	-	2	20	-	100
Rural Lives Development Foundation	20	-	45	15	20	100
National AIDS Non Government Organization Commission	25	-	60	15	-	100
Thai Traditional Medicine Development Foundation	80	-	10	10	-	100
National Council of Woman of Thailand	15	-	50	20	15	100
Social Welfare Council of Thailand	50	10	20	20	-	100
Association of Disable People	10	-	20	70	-	100
TISCO Charity Foundation	85	-	-	15	-	100
Thai Sangsan Association	-	-	50	50	-	100
Foundation of Rural Rehabilitation of Thailand	-	-	100	-	-	100
Sangsan Thai Association	-	-	80	20	-	100
Population&Community Development Association	17	-	68	15	-	100
Thai-German Fund	80	-	-	20	-	100
National Council for child and Youth Development	-	-	-	-	-	0
Urban Community Foundation	90	-	9	1	-	100
The Development Cooperation Foundation	-	-	-	-	-	0
Siam Cement Foundation	10	-	80	5	5	100
Toyota Thailand Foundation	40	-	50	10	-	100
Thai-Rath Newspaper Foundation	-	-	-	-	100	100
Thai Children Devotion Foundation	20	-	50	30	-	100
NGO Coordination Commission	10	-	-	20	70	100
Foundation for Woman Opportunity Promotion	10	-	70	20	-	100
Children Foundation	10	-	70	20	-	100
Doctor Sem Prinpuangkaew Foundation	-	-	80	20	-	100
Network Development Foundation	50	-	25	25	-	100
Sueb Nakasatien Foundation	30	-	50	20	-	100
Alliances for Development	-	-	50	50	-	100
Foundation of Education Funds for Development	75	10	15	-	-	100

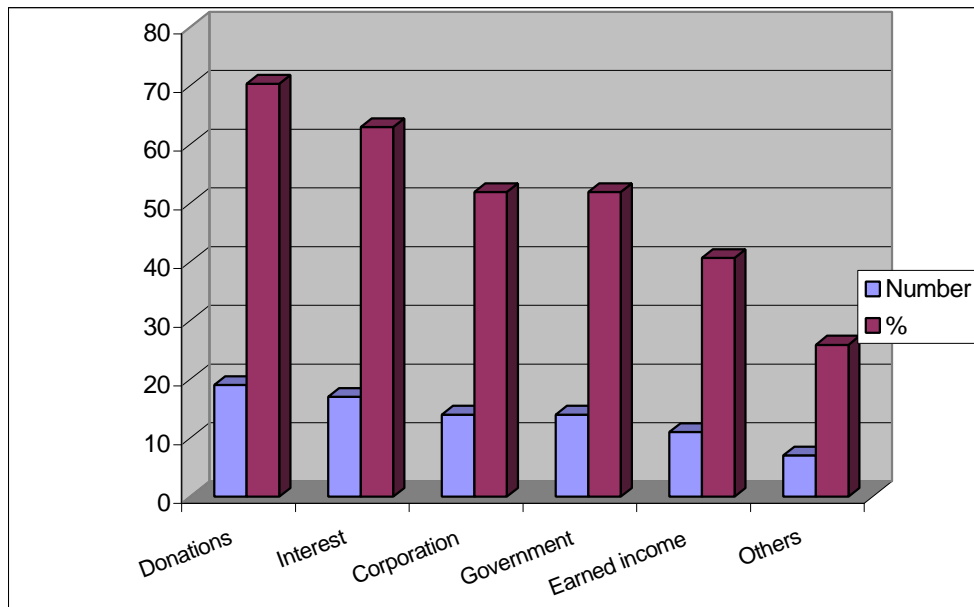
Organizations whose primary activity is the giving of grants give more than 80% of their revenue to other organizations. These major grant-givers include the Thai Traditional Medicine Development Foundation, TISCO Charity Foundation, and the Urban Community Foundation. However, relevant to Figure 4, more than half of the organizations surveyed spend most of their money on operating and implementing their own projects. Table 1 also shows that CSROs in Thailand tend to be focused either on grantmaking or on their own projects. While some CSROs are both grantmaking and operating

organizations, the figure above indicates that most organizations tend to choose one over the other.

CSRO Revenue: Domestic

In general, CSROs get most of their income from individual donations. However, significant income is also derived from the interest on accumulated funds and corporate and government sources. For example, the Foundation of Education Funds for Development receives 65% of its total revenue from private donations, 30% from business organizations, and 5% from interest on deposits.

Figure 7: Source of CSRO Revenue



International Sources

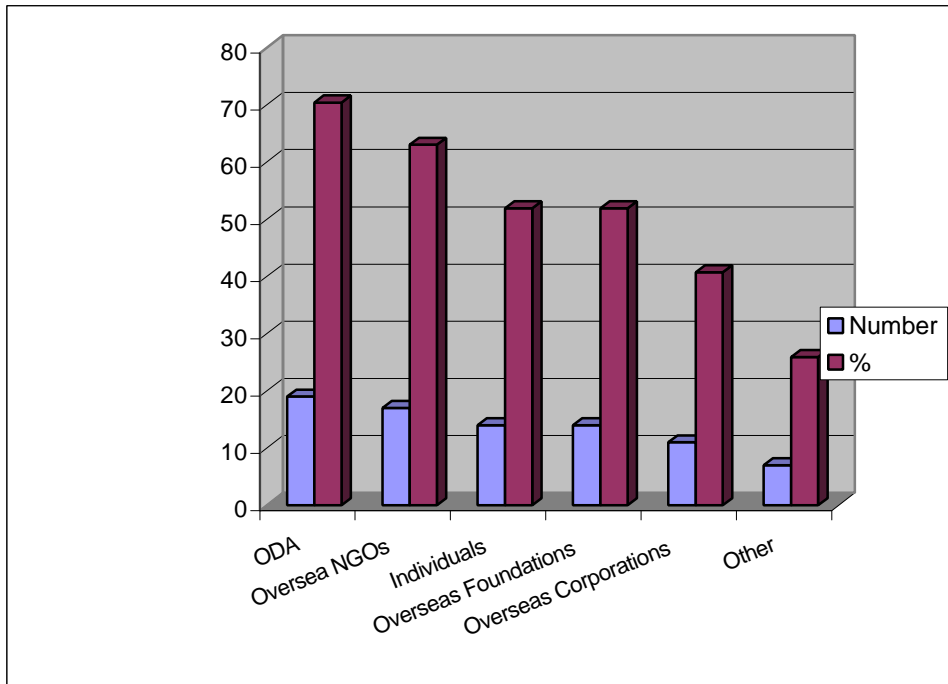
In addition to domestic financial sources, international funds support CSRO operations. There are five main overseas sources of funds:

1. Official development assistance (ODA) agencies
2. Overseas NGOs
3. Individuals
4. Overseas foundations

5. Overseas corporations

The results of this research demonstrate that most revenue is received from ODA agencies with overseas NGOs being the second largest provider of funds. Three of the respondents in this study said that they received funds from overseas corporations.

Figure 8: Source of International Donations

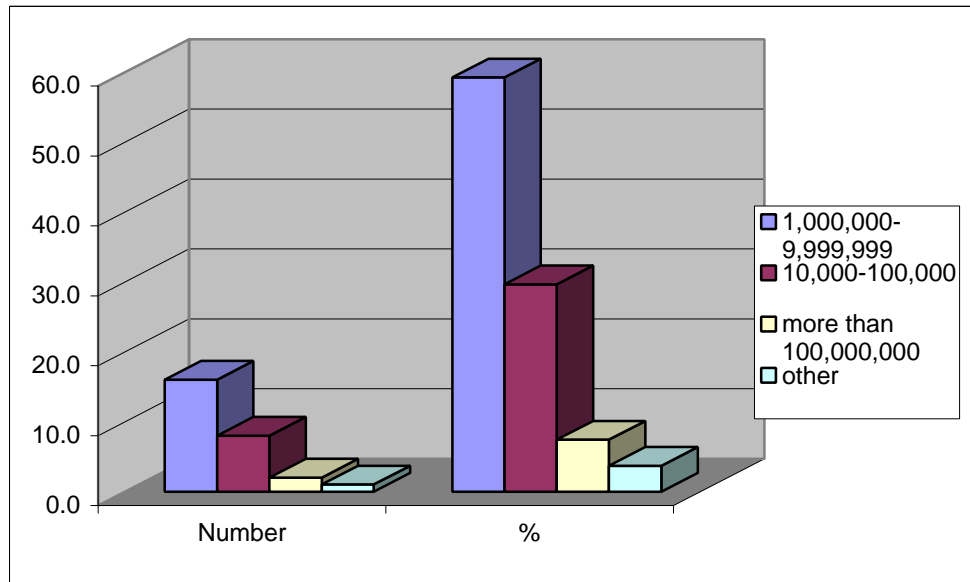


Endowment

The exact amount of endowment funds was difficult to ascertain as many respondents were reluctant to share financial data. However, the

following graph shows estimated amounts. Out of the 30 CSROs in this study, 17 received endowments of between 1 and 10 million Baht (\$1 = 45 Baht).

Figure 9: Amounts of Endowments



Size of Donations

The following table shows the largest and smallest amounts donated by each CSRO to other organizations. The average largest donation is

approximately 2,500,000 Baht and the average smallest donation is around 9,750 Baht.

Table 2: Largest and smallest amounts donated by each CSRO to other organizations

Foundation/Association	Donated	
	Largest	Smallest
Woman's Foundation	5,000	3,000
Rural Lives Development Foundation	500,000	5,000
National AIDS Non Government Organization Commission	800,000	7,500
Thai Traditional Medicine Development Foundation	640,000	100,000
National Council of Woman of Thailand	300,000	20,000
Social Welfare Council of Thailand	10,000,000	5,000
Association of Disable People	20,000	5,000
TISCO Charity Foundation	50,000	600
Thai Sangsan Association	-	-
Foundation of Rural Rehabilitation of Thailand	-	-
Sangsan Thai Association	-	-
Population&Community Development Association	1,000,000	1,000
Thai-German Fund	600,000	20,000
Urban Community Foundation	1,000,000	1,000
Siam Cement Foundation	500,000	3,000
Toyota Thailand Foundation	3,000,000	4,000
Thai-Rath Newspaper Foundation	50,000	1,000
Thai Children Devotion Foundation	17,000	5,000
NGO Coordination Commission	15,000,000	300
Foundation for Woman Opportunity Promotion	5,000	3,000
Children Foundation	100,000	1,500
Doctor Sem Prinpuangkaew Foundation	300,000	3,000
Network Development Foundation	1,000,000	5,485
Sueb Nakasatien Foundation	100,000	5,000.00
Alliances for Development	-	-
Foundation of Education Funds for Development	20,000,000	15,000

Number of CSRO Staff and Volunteers

Figure 10 shows the number of salaried staff and volunteers in CSROs. About 96.3%, or 26 CSROs, have salaried staff. The Population and Community Development Association has the largest number with 250 employees. The only one that has no full-time staff is the Thai Traditional Medicine Development Association. About 44.4%, or 12

organizations, have volunteers who also receive some form of compensation, and again the Population and Community Development Association has the largest number at 445 people. About 40.7%, or 11 organizations, use volunteers without compensation. The Doctor Sem Prink-Puangkaew Foundation has the largest number of unpaid volunteers at 500 people.

Conclusion

Undoubtedly, CSROs are increasing in number, size and impact in Thailand. As we learn more about this sector, critical issues and questions around their development and growth stand out. These issues and questions generally fall into three areas: that of the need for capacity building for CSROs; the enabling environment to support the development and growth of CSROs; and general understandings of the role of CSROs in Thai society.

In order to truly leverage the opportunities that exist among CSROs in Thailand to create a stronger civil society, **capacity building** is critically needed. Key areas of capacity building that were identified during the course of this research are as follows:

Sustainable Funding. Many international sources of funds have discontinued support for Thai CSROs leaving these organizations in a position of needing to raise more funds on their own.

Building human resources. People often come to organizations like CSROs because they believe in the goals of the organization and have the passion to strive for a better society. Increasingly, more attention is being drawn to the managerial and organizational skills required to complement this passion.

Transparency and scrutiny. As the CSRO sector gradually matures, more organizations are learning of the important role that systems for

financial reporting and/or operations play in building and maintaining strong accountable organizations.

As in any society, the **enabling environment** is a critical component that can either positively or negatively affect the development of CSROs. In the case of Thailand, there is a need to secure a stronger and more enabling environment. At present, CSROs are subject to paying taxes. While tax exemptions are possible, obtaining one requires inspections by government officers which usually take significant time to complete and contain many bureaucratic steps. At this time, only a very few philanthropic organizations have received tax exemptions in Thailand.

Finally, there is still **little understanding** in Thai society about the role played by CSROs, both within the civil society sector and outside of it. Increased communication within and between sectors will become increasingly important to the sustenance and flourishing of CSROs in the country. Even within the sector, there is some struggle to identify how broad of a role a CSRO can efficiently play. Some believe that the financial transfer of resources to communities is the most appropriate and critical role a CSRO can play while others believe that CSROs should also implement programs and offer services to NGOs.

Directory of Civil Society Resource Organizations in Thailand

Thai NGO Coalition on AIDS (TNCA)

Managing Director: Dares Chusri

Address: 801/21 Soi
Ngamwongwan 27,
Ngamwongwan Road,
Bangkrasor, Muang,
Nontaburi 11000

Telephone: (66-2) 953-5355-6

Fax: (66-2) 952-5180

Email: tnca@ksc.th.com

Website: <http://www.tncathai.com>

Year Founded: 1989

Number of Staff

Full time employees: 3

Unpaid volunteers: 12

Paid volunteers: 2

Mission

- ❑ To represent NGOs on Aids
- ❑ To strengthen the capability of the regional network
- ❑ To coordinate among NGOs on AIDS, HIV-infected people and the regional TNCA network

Program Areas

- ❑ Representing NGOs on Aids
- ❑ Campaigning and advocating for AIDS issues at policy level
- ❑ Monitoring the situations of human rights and conducting research for regional TNCA

Other Services Provided

- ❑ Arranging training/seminar for TNCA members and regional networks in North, Central and Northeast
- ❑ Providing technical support/consultation for NGOs and members

- ❑ Providing information for NGOs on AIDS, TNCA members and regional networks
- ❑ Collecting information, conducting surveys and providing information for Ministry of Public Health and international organizations
- ❑ Building networks and understanding with the public on NGO activities on AIDS issues

Nature of Grantmaking Activity, 1998

No grant was provided.

Major Sources of Funding

- ❑ 70% from the Ford Foundation
- ❑ 30% from domestic organizations e.g. Ministry of Public Health
- ❑ The highest amount ever received is approximately 2,000,000 Baht from the Ford Foundation.

Endowment

- ❑ Accumulated fund was about 1,300,000 Baht.
- ❑ Annual income was about 1,200,000 Baht.
- ❑ As of fiscal year 1998, TNCA earned a net income of 1,500,000-2,000,000 Baht.

Additional Information

- ❑ TNCA concentrates on network building because it is effective for policy advocacy.
- ❑ Coordination could facilitate the exchange of information, experiences and lessons among NGOs on Aids, members and regional networks.

AIDS Network Development Foundation (AIDSNET)

Director: Assoc. Prof. Darunee
Rujkornkan, Ph.D

Address: 145/1 Sripoom Road
Muang District
Chiangmai, 50200

Telephone: (053) 222-417

Fax: (053) 222-484

Email: aidsnetn@loxinfo.co.th
aidsnetf@loxinfo.co.th

Year Founded: 1997 (NAPA-1993)

Number of Staff

17 (10 in North Office; 7 in Northeast Office)

Mission

- ❑ To help reduce the transmission and impact of HIV/AIDS and to increase the local acceptance, support and care of HIV/AIDS infected/affected people in the northern and northeastern provinces of Thailand
- ❑ To access and coordinate financial, technical, information and technological resources from GOs, NGOs, communities, PHA, academia, the private sector, and INGOs to support AIDS-related work
- ❑ To strengthen and develop the capacity of individuals, organizations, networks and strategies in AIDS-related work
- ❑ To promote cooperation in AIDS-related work including linkages and the exchange of news and information, knowledge, ideas, experiences, lessons learned and approaches to solving the

problem of AIDS at the local, national and international levels

Other Services Provided

- ❑ Being an information center for AIDS issues
- ❑ Publishing and/or distributing related documents on AIDS
- ❑ Publishing and distributing bilingual newsletter, "*AIDSNet Newsletter*"
- ❑ Publicizing information concerning AIDS via email, mail, telephone, and fax
- ❑ Arranging workshops, seminars and training courses to increase efficiency and effectiveness in working with affected people and AIDS prevention
- ❑ Providing an equipped small conference room for meetings
- ❑ Coordinating, briefing, site visiting and developing work experience on AIDS
- ❑ Offering consultations on narrative knowledge as well as AIDS working group

Nature of Grantmaking Activity, 1993-present

- ❑ 1993-97: The foundation is the core grantor for Northern NGOs working on AIDS. Over this time, 192 projects were approved, with grants ranging from 40,000 to 1,000,000 Baht.
- ❑ Since 1993, AIDSNet has been supporting over 600 projects in the north and northeast, approximately 300 organizations including NGOs/networks, PHA groups/networks, community-based organizations, local government agencies, religious bodies, and academic institutions.

- ❑ 2001-2002: AIDSNet has more recently been supporting interventions for prevention (particularly for those more vulnerable like youth and migrant workers), awareness raising, care and support, networking, training and capacity building, and publications.
- ❑ 2002 onward: AIDSNet is focusing its support on specific issues (e.g. community responses, harm reduction) and/or specific populations (e.g. migrant workers, affected children) with an emphasis on model development, documentation and dissemination. AIDSNet will work with a smaller number of partner organizations to ensure effectiveness of models to be developed and lessons to be captured.

Major Sources of Funding, 1993 - Present

The foundation received grants from home and abroad as follows:

Domestic source:

- ❑ Ministry of Public Health, 7,575,000 Baht for four projects

Foreign Sources:

- ❑ UNAIDS, 586,300 Baht
- ❑ UNAIDS, 2,604,970 Baht
- ❑ UNDP, 1,005,810 Baht
- ❑ UNICEF, 1,587,928; 848,000; 1,165,283 Baht
- ❑ UNESCO, 1,068,008 Baht
- ❑ Japanese Embassy, 3,586,584 Baht
- ❑ AusAid, 826,560 Baht
- ❑ European Council, 66,796,255 Baht
- ❑ International HIV/AIDS Alliance, 6,656,000 Baht
- ❑ Rockefeller Foundation, 9,250,000 Baht

Endowment

In 1998, in addition to capital of 200,000 Baht, the foundation earned a net income of 270,664 Baht.

Additional Information

- ❑ The foundation was previously registered as NAPAC (Thai-Australia Northern AIDS Prevention and Care Program) and was originally founded and financed by AUSAID (Australia).

The National Council of Women of Thailand Under The Royal Patronage of Her Majesty The Queen

President: Senior Col. Asanee Saovapap

Address: 514, Banmanangkasila, Lan Luang Road, Dusit, Bangkok 10300

Telephone: (662) 281-0206, 281-0060, 281-0081, 281-0597, 281-1018

Fax: (662) 281-2189

Email: ncwt@mozart.inet.co.th

Website: http://www.inet.co.th/org/ncwt/ncwt1_e.htm

Year Founded: 1956

Number of Staff

Full time employees: 141
Volunteers: 19

Mission

- ❑ To raise the status of Thai women and strengthen their capacity for self-reliance

Program Areas

- ❑ To act as a focal point for coordinating, promoting and supporting all activities of women's organizations throughout Thailand
- ❑ To study, collect information and exchange ideas among women's organizations

Other Services Provided

- ❑ Being an information center for NGO members
- ❑ Campaigning for support of NGO and member activities
- ❑ Providing consultation for members
- ❑ Arranging occupational training courses for the elderly and housewives
- ❑ Cooperating with government agencies

Nature of Grantmaking Activity, 1998

- ❑ There were 40 applicants and 90% were approved.
- ❑ The highest amount was 300,000 Baht. The lowest amount was 20,000 Baht for cooking oven for housewives.

Amount of Funds Allocated to Each Project, 1998

- ❑ The National Council of Women of Thailand supported the projects prepared by its members by allocating the aid of 200,000 Baht to each of the four regions each year.

Major Sources of Funding

Domestic sources:

- ❑ Government aid (Ministry of Public Health, Department of Public Welfare, and Ministry of Education)
- ❑ Interest on savings
- ❑ Income earned on activities
- ❑ Donations from public
- ❑ Membership fees

Foreign source:

- ❑ 2,000,000 Baht

Endowment

- ❑ The accumulated fund including interest from the commencing period was about 1,000,000 - 10,000,000 Baht.
- ❑ The annual income of 1,000,000 -10,000,000 Baht

Additional Information

- ❑ The National Council of Women of Thailand focuses on women's development rather than charity.
- ❑ All officers except the full time employees are volunteers.
- ❑ The policy of the council is in compliance with projects of the Women's Status Promotion Committee.

National Council on Social Welfare of Thailand Under Royal Patronage

Director: Prof. Prapaat Ouaichai

Vice President: Somporn Thepsithar

Address: 257 Mahidol Tower,
Ratchawitee Road,
Phayathai, Bangkok
10400

Telephone: (662) 246-1457,
245-5520
Fax: (662) 247-6249
E-mail: info@ncswt.or.th,
Website: http://www.ncswt.or.th/

Year Founded: 1960

Number of Staff

Permanent employees: 200
Unpaid volunteers: 80
Paid volunteers: 20

Mission

- ❑ To cooperate, coordinate, support, assist and develop programs for disadvantaged persons through family, community and society
- ❑ To promote national institutions, religion, kingship and constitutional monarchy

Program Area

- ❑ Providing welfare-related services for government, private sector and member organizations

Other Services Provided

- ❑ Arranging training courses for NGOs/ community organizations
- ❑ Assisting NGOs/ community organizations in technical matters
- ❑ Providing information on research, publicized documents and printed matters for NGOs/community organizations
- ❑ Conducting research for government/ foreign organizations
- ❑ Coordinating among networks and arranging activities for NGOs/community organizations

- ❑ Campaigning for NGO/ community organization's activities

Nature of Grantmaking Activity, 1999

- ❑ 109 members applied for aid for various projects.
- ❑ 100% were granted.

Amount of Funds Allocated to Each Project, 1999

- ❑ Project on welfare: 31 members, 31 projects amounted to 520,800 Baht
- ❑ Project on social problems: 11 members, 11 projects amounted to 264,500 Baht
- ❑ Project on development: 67 members, 67 projects amounted to 1,196,000 Baht

Major Sources of Funding

Domestic sources:

- ❑ Government aid (Government Lottery Office), 55%
- ❑ Income earned on activities such as participation in Red Cross fair, donation from Royal Charity, and Mother's Day activities, 20%
- ❑ Donations from business organizations, 10%
- ❑ Public contributions, 10%
- ❑ Interest on savings, 5%

Foreign sources:

- ❑ Aid from international development agencies such as United Nations, 60%
- ❑ Donations from Foundations/ Associations, 20%
- ❑ Private Development Organizations/ NGOs, 10%
- ❑ Business Organizations, 5%
- ❑ Public contributions, 5%

Most of the aid was specifically for activities aimed to prevent drug use.

Endowment

- Annual income of 1,000,000-10,000,000 Baht
- Accumulative fund of 50,000,000 Baht

Development of Traditional Medicine Foundation

Director: Yongsak Tantipidok

Address: 1/156 Soi Kaona 2,
Charan Sanitwong 13
Road, Phasi Charoen,
Bangkok 10160

Telephone: (662) 410-2382-3

Fax: (662) 412-6271

Email: yongsak@health.moph.co.th

Year Founded: 1991

Number of Staff

Volunteers: 5

Mission

- To develop traditional Thai medicine
- To promote personal Development
- To promote knowledge development
- To research law
- To improve standards of service

Program Area

- The foundation concentrates on the development of Thai medicine.

Other Services Provided

- Arranging training/ seminar such as knowledge of

traditional Thai medicine and massage

- Coordinating with NGO networks and community organizations on traditional Thai medicine
- Providing NGOs and community organizations with technical consultation
- Conducting research and providing information for government
- Campaigning for NGO and community organizations' activity via newsletter

Nature of Grantmaking Activity, 1998

No grants are provided.

Amount of funds Allocated to Each Project, 1998

- There were two projects: "Traditional Thai Medicine Newsletter" and "Traditional Thai Medicine Paying Respect to Leader" with a total aid of 98,000 Baht donated.

Major Sources of Funding

- Government aid (Ministry of Public Health), 65%
- Interest on savings, 31%
- Public contributions, 4%

Endowment

- Accumulated fund of 10,000-100,000 Baht
- Annual income of 10,000-100,000 Baht
- Net annual income in 1998 of 112,274 Baht

Foundation for Women

Director: Dr. Chalerm Sri Tammaboot

Address: 35/267 Soi Charan
Sanitwong 62, Charan
Sanitwong Road, Bang
Yikhan, Bang Plad,
Bangkok 10700

Telephone: (662) 433-5149,
435- 1246

Fax: (662) 434-6774

Email: ssw@mozart.inet.co.th,
FFW@mozart.inet.co.th

Year Founded: 1984

Number of Staff

Full time employees: 11

Volunteers: 4

Mission

- ❑ To pursue women's development
- ❑ To help women and children victimized by violence
- ❑ To promote and support women's rights and equality

Program Areas

- ❑ Supporting and promoting women's rights and equality
- ❑ Helping marginalized women, especially those in the North and Northeast

Other Services Provided

- ❑ Training for women and youth in the areas of violence against youth, women and their rights
- ❑ Technical assistance, consultation and temporary accommodation for women who have experienced violence in their family
- ❑ Providing information via newsletters and other media
- ❑ Building information exchange network with community

organizations and remote teachers

- ❑ Research and data collection on various kinds of women's problems such as female trafficking and dissemination of such information for government and private organizations
- ❑ Networking/arranging activities for NGOs/ community organizations

Nature of Grantmaking Activity, 1998

- ❑ There were 10-15 applicants and 100% of those were granted.
- ❑ The highest amount was 5,000 Baht and the lowest was 3,000 Baht.

Major Sources of Funding

Domestic sources:

- ❑ Income from activities such as book and notebook selling, 44%
- ❑ Interest on accumulated fund, 54%
- ❑ Public donations, 2%

Foreign sources:

- ❑ Foreign units assisting in state development, 15%
- ❑ Public contributions, 5%
- ❑ Foreign NGOs, 80%

Endowment

- ❑ Accumulated fund, including interests from savings of 7,000,000-8,000,000 Baht
- ❑ Annual income of 2,000,000-3,000,000 Baht

Foundation for Agricultural and Rural Development

Director: Wanchai Jullasukon

Address: 108/725-727
Soi Jangwattana 4,
Jangwattana Rd,
Bangkhen, Anusawaree,
Bangkok 10220

Telephone: (662) 970-0810-1

Fax: (662) 970-0812

E-mail: farm@a-net.net.th

Year Founded: 1980

Number of Staff

Full time employees: 18

Unpaid volunteers: 200

Paid volunteers: 20

Mission

- ❑ To create opportunities for new settlements
- ❑ To help rural poor people achieve better quality of life

Program Areas

- ❑ Coordinating with public and private sectors
- ❑ Creating opportunities for the poor in the Northeast through leadership training programs

Other Services Provided

- ❑ Providing trainings/seminars and consultation for various target groups such as housewives and HIV-infected people
- ❑ Providing technical assistance/consultation for NGOs to strengthen community economy
- ❑ Being a community coordinating center and providing information for

NGOs, community organizations, domestic and foreign allies (such as in Vietnam, Philippines, Cambodia, etc.)

- ❑ Providing information on research and publishing documents and printed matter for NGOs and community organizations

Nature of Grantmaking Activity, 1998

- ❑ In 1998, grants were provided for individuals. Most applicants were AIDS-infected persons and primary to junior high school children. Three hundred persons or seventy-five percent of the total proposals were approved.
- ❑ The highest grant awarded was 500,000 Baht and given to support "*Self Reliant Community*" program; the lowest one was 5,000 Baht for "*Lunch for the Poor*" program.

Amount of Funds Allocated to Each Project, 1998

- ❑ In 1998, the Foundation did not award grants to any projects but only to AIDS-infected persons and as scholarships to school children.

Major Sources of Funding

Domestic sources:

- ❑ Government aid, 70 %
- ❑ Interest on savings fund, 5%
- ❑ Donations, 10 %
- ❑ Corporate sector donations, 10%
- ❑ Other contributions, 5 %

Foreign sources:

- ❑ Foreign foundations/associations, 50 %
- ❑ ODA Agencies, 25 %
- ❑ Foreign NGOs, 20 %
- ❑ Public contributions, 5 %

Endowment

- ❑ Accumulated fund with interest in the 100,000 to more than 1,000,000 Baht range and an annual income in the 10 to 100,000,000 Baht range.

Association of Physically Handicapped of Thailand

President: Supacheep Ditsated

Address: 73/7-8 Soi Tiwanon 8,
Tiwanon Road, Talad
Khwang, Muang,
Nonthaburi 11000

Telephone: (662) 951-0445-7

Fax: (662) 951-0567

E-Mail: apht@loxinfo.co.th

Website: <http://www.apht.or.th/>

Year Founded: 1982

Number of Staff

Full time employees: 4

Unpaid volunteers: 16

Paid volunteer: 1

Mission

- ❑ To support, coordinate, and cooperate in activities related to the rights and benefits of handicapped people
- ❑ To strengthen organizational capability and provide useful information without playing an advocacy role

Program Areas

- ❑ Promotion of rights and opportunities for handicapped people
- ❑ Building network

Other Services Provided

- ❑ Training and seminars for members in the network
- ❑ Technical support and consultation for members
- ❑ Coordinating network activities for the handicapped
- ❑ Providing information for members and public through "Sai Supan" journal
- ❑ Maintaining and building accessories for the handicapped

Nature of Grantmaking Activity, 1998

- ❑ The fund is given to members for projects and activities.
- ❑ 13 members applied for grants and 8 were approved.

Amount of Funds Allocated to Each Project, 1998

- ❑ Training of domestic wheel chair, 60,000 Baht
- ❑ Purchasing "Wheel Person Clinic", 13,000 Baht
- ❑ National Sport, 30,000 Baht
- ❑ International wheel chair manufacturing training project, 37,440 Baht

Major Sources of Funding

Domestic sources:

- ❑ Activities, 15%
- ❑ Donations from organizations, 10%
- ❑ Public donations, 5%
- ❑ Government aid, 70%

Foreign sources:

- ❑ Foreign foundation support, 55%
- ❑ Foreign private organizations, 20%
- ❑ Japanese Government Aid, 20%
- ❑ Public contributions, 5%

Endowment

2,012,212.61 Baht

Additional Information

- ❑ No income generating activities are engaged in.
- ❑ The association survives by receiving a quota of the earnings received through the government lottery.

TISCO Foundation

Manager: Pattira Wattanawarangkul

Address: 48/11 Tisco Tower, 5th floor, Sathorn Rd, Bangrak, Bangkok 10500

Telephone: (662) 638-0555

Fax: (662) 638-0554

E-mail: foundation@tisco.co.th

Website:

http://www.tiscogroup.com/tcabout_7.htm

Year Founded: 1982

Number of Staff

4

Mission

- ❑ To provide support for social and economic development activities

Program Areas

- ❑ Providing scholarships to students in need at all levels of education in every part of the country
- ❑ Providing medical funding for patients in need
- ❑ Providing occupational investments for the poor regardless of nationality or religion

Other Services Provided

- ❑ Coordinating with other NGOs and government units for public benefits in such activities as cooperating and helping in the time of public disasters (fire, floods)

Nature of Grantmaking Activity, 2001

- ❑ In 2001, there were 8,000 applicants for scholarships, medical fees and investments
- ❑ Of the applicants, 3,500 were approved with the highest amount being 50,000 Baht (for medical fees for artificial artery surgery at King Mongkut hospital) and the smallest amount being 600 Baht

Amount of Funds Allocated to Each Project, 2001

- ❑ 3,474 scholarships, 7,000,000 Baht
- ❑ Grants for medical funding, 300,000 Baht
- ❑ Grants for investment, 200,000 Baht

Major Sources of Funding

Domestic sources:

- ❑ Income from TISCO activities, such as charity golf, charity bowling, 5 %
- ❑ Donations from TISCO officers group, 5%
- ❑ Public contributions, from TISCO customer, 5%
- ❑ Interest, 5%

The net annual income of the foundation in 2001 was about 9,000,000 Baht

Endowment

- ❑ The accumulated fund is about 100,000,000 Baht
- ❑ Annual income is about 10,000,000 Baht

Tai Wisdom Association

Director: Theerawong Dhanitveth

Address: 738/9 Namuang, Tambon
Naimuang, Muang,
Khonkaen 40000

Telephone: (043) 321-015-6

Fax: (043) 224-844

E-mail: taiwis@kknet.co.th

Website: <http://www.taiwisdom.org>

Year Founded: 1998

Number of Staff

23 permanent employees

Mission

- To promote early childhood development and parental education

Program Area

- Educating parents about early childhood development such as how to raise their children, how to help children socialize and how to create a suitable family environment

Other Services Provided

- Providing training for community organizations dealing with issues such as how to use resources for childcare and development
- Providing technical support /consultations such as the Happy Family Radio Program for community organizations or families with early childhood development issues
- Providing information, news, published documents and printed matters such as Dek Tai Newsletter, a bi-monthly newsletter raising awareness of issues in early childhood

development to community organizations and the public

Nature of Grantmaking Activity

No grants are provided.

Amount of Funds Allocated for Each Project, 1998

Support was allocated for projects on:

- Early childhood development
- Early childhood development campaign
- Development of rural children's education
- Improved quality of life of local people

The highest grant amount awarded was about 2,000,000 Baht and the smallest was about 5-10 Baht.

Major Sources of Funding

Domestic sources:

- Public contributions were solicited at the office and other locations in Khonaen, Nakorn Ratchasima, Udonrtani, Nongkhai, department stores, hospitals, and elsewhere
- Selling souvenirs, such as T-shirts, fairy tale stories, hand-crafted purses, etc.

Foreign sources:

- Bernard van Leer Foundation, The Netherlands, 70%
- In-country sources, 30%

Endowment

- An accumulated fund, 300,000 Baht
- An annual income, 4,000,000 - 5,000,000 Baht in 1999
- Net income, 3,000,000 Baht

Additional Information

- The association brings together groups of persons who want to help society.

- The association belongs to all and is owned by all to create social benefits for children.

Foundation for Thailand's Rural Reconstruction Movement under Royal Patronage

Director: Siriwon Janekarn

Address: 2044/21 New Petchaburi Road, Huay Kwang, Bangkok 10320

Telephone: (662) 319-1648, 319-5017

Fax: (662) 319-5019

E-mail: b392655@buntharik.spu.ac.th

Website:

<http://trrmhome.hypermart.net/index.html>

Year Founded

- Registered as a foundation on December 14, 1967
- Registered under Royal Patronage on October 31, 1969

Number of Staff

24 permanent employees

Mission

- To study/conduct research on rural development
- To arrange training and consultation for community organizations/NGOs

Program Areas

- Providing training
- Conducting research on evaluating the Rural Development Fund Operation

(between January 1999 and February 2000)

- Working on a project for educating and developing the indicators for evaluating the success of community businesses

Other Services Provided

- The foundation cooperates with the Foundation of Thai Volunteers for Society to establish "Volunteer for Society Coordinating Center" Program.

Nature of Grantmaking Activity

No grants are provided but in-kind contributions are made.

Amount of Funds Allocated for each project

No information was provided.

Major Sources of Funding

- Cash, 5.4 million Baht
- Short term investment, 31.4 million Baht
- Contingency sum, 3.5 million Baht
- Investment in stock market
- Land, building and equipment, 4.3 million Baht
- Assets, 0.015 million Baht

The total is 44.8 million Baht.

1999 annual income:

- Operational income, 5.27 million Baht
- Donation for funds, 3.00 million Baht
- Interest, 1.69 million Baht

The total was 9.95 million Baht.

1999 Donations were comprised of:

- Public, 4,554,400 Baht (comprised of 3,400,000 from donors in liquor business)
- General donations, 3,044,200 Baht

- ❑ Donations from the Rural Children's Project, 1,510,200 Baht

Endowment

- ❑ Cash, deposit, short-term investment, and contingency sum for Rural Development Project, 40,378,600.67 Baht
- ❑ Investment in stocks, land, building, and equipment, 4,415,472.29 Baht

The total is 44,794,072.96 Baht.

Thai Environmental and Community Development Association

President: Khun Ying Chodchoi Sophonpanit

Address: United Center Tower, 16th floor, 323 Silom Road, Bangkok 10500

Telephone: (662) 231-4257, 230-1884

Fax: (662) 236-8984

E-mail: magiceyes@magiceyes.or.th

Website: <http://www.magiceyes.or.th/>

Year Founded: 1986

Number of Staff

30 permanent employees

Mission

- ❑ To work on environmental conservation campaign, provide information and educate the public
- ❑ To create practical and sustainable campaign

- ❑ To create a coordination network for local community organizations, among educational institutes, local community leaders and academics

Program Areas

- ❑ Training personnel and community members
- ❑ Technical support and consultation including legal advice
- ❑ Disseminating information through media and distributing research information to the public and private sectors

Other Services Provided

- ❑ Assisting marginalized people
- ❑ Being an information, news, and resource center supporting various projects
- ❑ The association either directly engages in the campaign project, considered its core activity, or providing lectures with equipment and venue

Nature of Grantmaking Activity

- ❑ There is no grantmaking activity.
- ❑ However, in the near future, a 400,000 Baht prize will be awarded to a student who wins a contest in environmental development.

Amount of Funds Allocated to Each Project

As stated above

Major Source of Funding

- ❑ 26 corporate members annually donate 100,000 Baht each.

Endowment

- ❑ No accumulated fund was revealed.

- However, there is an estimated 10,000,000 Baht held in the form of bonds.

Additional information

- The organization is registered as an association - not a foundation. Therefore, the funds have to be kept in cash to be transferred to other organizations.
- Public donations in 1998 was claimed to be 500,000 Baht. However, this figure was against the fact that 1,600,000 Baht was transferred to the Navy and 1,900,000 Baht to the "Turtle Project".
- The association does not grant aid directly but helps in outlining the grant application for the grantor.

Population and Community Development Association

Chairman: Mechai Viravaidya

Director: Urai Homtawee, Head of Research and Evaluation Department

Address: 6 Soi Sukhumwit 12, Sukhumwit Road, Bangkok 10110

Telephone: (662) 229-4611-28

Fax: (662) 229-4632

E-mail: pda@pda.or.th

Website: <http://www.pda.or.th>

Year Founded

- Announced as a public charity organization by the Ministry of Finance on June 21, 1984

- Announced as an association in May, 1994

Number of Staff

Full time employees: 250

Specially employees: 82

Project coordinators: 98

Officers in network: 256

Mission

- To promote family planning and basic public health
- To promote higher income for rural people
- To promote water resource development and sanitation
- To alleviate public disasters and encourage public welfare
- To promote children's and women's right
- To conserve natural resources and environment
- To build better understanding about AIDS among the public
- To develop rural areas by private business sector
- To disseminate knowledge, experiences and academic information

Other Services Provided

- Educating rural people on democracy issues

Nature of Grantmaking Activity, 1998

The aid in 1999 was about 83,000,000 Baht distributed as follows:

- Administration expenses, 15 %
- Family planning, 3 %
- Health service, 4 %
- Rural development, 70 %
- Fundraising, 1 %
- Providing information and Evaluation, 7 %

Classification of projects

- By the Association itself, 80 %
- By jointing with community organizations, 20 %

In joining with community organizations, the association arranged training programs for community leaders to write project proposals.

Amount of Funds Allocated to Each Project

- ❑ In 1999, 20 percent of annual budget or 16,600,000 Baht was allocated for grants.
- ❑ The highest amount of grant was 1,000,000 Baht.

Major Sources of Funding, 1999

Foreign sources:

- ❑ Foreign governments and embassies, 33.3 %
 - British Embassy
 - Israeli Embassy
 - Japanese Embassy
 - Dutch Embassy
 - Danish government
- ❑ Foreign NGOs, 33.3%
 - German agricultural organization
 - International Rice Research Institute
 - Conrad Adenauer Foundation
 - Norwegian Christendom for AIDS
 - International Optimist organization
- ❑ Foreign companies, 33.3%
 - James Clark
 - Lucent Technology

Domestic sources:

- ❑ Government, 15%
 - Ministry of Public Health
 - Department of Energy
 - Development and Promotion, Ministry of Science and Technology
 - Department of Industrial Promotion, Ministry of Industry
- ❑ Private businesses, 70%

- Sri Ayudthaya Finance Co., Ltd.
- East Water Development Co., Ltd.
- Nike (Thai) Co., Ltd.
- ❑ Other sectors, including NGOs and State Enterprises
 - The Thai Farmers Bank Foundation
 - The Petroleum Authority of Thailand
 - Petroleum Research and Production Public Co., Ltd.

Endowment

- ❑ Approximately 15,000,000 - 25,000,000 Baht, excluding working capital
- ❑ In addition, 10 companies provide support for the association.

Additional Information

- ❑ The association attempts to raise support from private sector in order to reduce the gap between the rich and the poor.
- ❑ Scope of work is rather broad now resulting in the reduction of the original family planning work to only 2 % of its total work.

Thai-German Development Foundation

Chairman: Mr. Apilas Osatananda
Secretary General: Ms. Pimpa Wongvorakul

Address: 49/12-13 Century Park Condominium, Bldg. C

Viphavadee Rangsit Road,
Soi 22 Ladyao, Chatuchak,
Bangkok 10900

Telephone: (662) 936-6760-2

Fax: (662) 936-6759

E-mail: thaigerfund@inet.co.th

Year Founded

- ❑ Initiated in 1980
- ❑ Approved on March 8, 1983,
with support of German Agro
Action (GAA)

Number of Staff

Full time employees: 5

Mission

- ❑ To support income-generating
activities for rural people and
communities as a way to
strengthen community self-
reliance in the North and
Northeast of Thailand
- ❑ To support agricultural
production and animal
husbandry projects
- ❑ To support women's groups
- ❑ To support underprivileged
ethnic and other groups
- ❑ To support environmental
conservation
- ❑ To support youth/children's
projects
- ❑ To support disaster relief

Other Services Provided

- ❑ Organizing a cooperative for
exporting community
handicrafts

Nature of Grantmaking Activity

- ❑ The foundation will provide
support in terms of grants and
loans within one year after
receiving proposals and
according to a definite
schedule of installments
supported by the GAA

- ❑ An average of 20 projects a
year will be approved with a
limited support of 600,000 Baht
- ❑ At present, there are about 150
on-going projects and 250
completed projects

Major Sources of Funding

- ❑ GAA supports up to 75% of the
fund
- ❑ An additional 20% comes from
the foundation's revolving
funds
- ❑ The final 5% from selling
handicrafts

Endowment

The foundation has a registered
capital of 200,000 Baht.

Additional information

Since GAA supported projects are
running out, the foundation is trying to
raise at least 1,000,000 Baht for the
endowment fund every year.

National Council for Child and Youth Development

Director: Srisak Thai-area

Address: 618/1 Nikommakkasan-
monthai Road
Ratchatewee, Bangkok
10400

Telephone: (66 2) 255-9922,
651-7033

Fax: (66 2) 254-7219

E-mail: ncyd@dordek.org

Website: <http://www.dordek.org>

Year Founded: 1985

Number of Staff

Full time employees: 9

Mission

- ❑ To act as a coordinating center among government and private sector and to enforce law, public policy and mechanisms that help protect children's rights and their development
- ❑ To build a network among children and youth development organizations
- ❑ To develop youth groups and their networks, and support activities that promote self-development in social community
- ❑ To support research and workshops focusing on solving problems that affect development of children and their families
- ❑ To provide financial assistance and training in support of children and youth efforts in Thailand
- ❑ To promote and support cooperation among all parts of society in mobilizing domestic resources for the development of children and youth

The council promotes coordinated efforts with private sectors with two main goals:

1. Development of organization's capability in four areas:
 - a. Training
 - b. Dissemination of information
 - c. Developing coordination of Networks
 - d. Servicing in academic issues, such as administration methods, and production
2. Enhancing youth leadership development

Program Areas

- ❑ Children and youth development

- ❑ Cooperation among handicapped children organization network, Youth Organization Network, and volunteer network
- ❑ Protecting children's rights

Other Services Provided

- ❑ Training and seminars on children issues
- ❑ Knowledge development

Nature of Grantmaking Activity, 1998

10% of 56 applicants were approved.

Amount of Funds Allocated to Each Project

Details on donation were not revealed.

Major Sources of Funding

Domestic Sources:

- ❑ International Organizations/Embassies, 83.22 %
- ❑ Public Contributions, 7.78 %
- ❑ Government Grants, 5.37 %
- ❑ Interest from savings funds, 3.43%
- ❑ Other activities (souvenir selling), 0.20%

Foreign sources:

- ❑ Foreign NGOs, 80%
- ❑ Foreign foundation donations, 15%
- ❑ Foreign units in development, 5%

Endowment

More than 10,000,000 Baht

Urban Community Foundation

Manager: Preeda Kongpaen

Address: 2044-28-33 New
Petchburi Road, Huay
Kwang, Bangkok

Telephone: (662) 718-0911
Ext.108-9

Fax: (662) 716-6003

Year Founded: 1992

Number of Staff

Full time employees: 1

Paid volunteers: 9

Mission

- ❑ To support community development activities such as training, study trip, etc.
- ❑ To provide loans as an additional budget for low-income earners in urban area
- ❑ To promote a community learning process

Program Areas

- ❑ Focusing mainly on supporting and providing grants to community organizations, private organizations secondarily and very few cases to the public in form of research scholarships
- ❑ Strengthening civil society

Other Services Provided

- ❑ Promoting NGOs and community organization networking
- ❑ Policy advocacy
- ❑ Campaigning for NGO and community organization activities emphasizing local people activities
- ❑ Providing information on research and activities of local organizations

- ❑ Being an information center of knowledge at different levels of the community organization network
- ❑ Providing technical support and advice to NGOs and community organizations
- ❑ Providing training courses and seminars for NGOs and community organizations
- ❑ The foundation does not conduct training by itself but provides funds for these activities.
- ❑ Activity emphasized is study trips among communities in order to build community networks.
- ❑ Conducting research and studies for government and international entities

Nature of Grantmaking Activity, 1999

Grants given to other organizations in 1999 are as follows:

- ❑ Community organizations (in network), 80%
- ❑ NGOs, 15%
- ❑ Public contributions, 5%

Amount of Funds Allocated to Each Project, 1999

Aids granted to other organizations in 1999 are as follows:

- ❑ Community organizations, 80%
- ❑ NGOs, 15%
- ❑ General public, 5%

Major Sources of Funding

Sources of funds can be divided into the following proportions:

- ❑ DANCED, 80%
- ❑ ESCAP, 5%
- ❑ UNDP, 5%
- ❑ Others, 10%

Annual aid from DANCED is approximately 10,000,000 Baht. The allocation of grants will be occasionally

considered, not by the fiscal budget basis method.

Endowment

- ❑ The accumulated amount was about 1,000,000 – 10,000,000 Baht.
- ❑ The registered capital in 1992 was 500,000 Baht and increased to 1,000,00 Baht.
- ❑ Only interest earnings were allowed to be used.

The Development Cooperation Foundation

President: Apilas Osatananda

Director: Narumon Lim

Address: 88/12 Park Pavilion Building, Soi Phaholyothin 7, Phaholyothin Rd, Phayathai, Bangkok 10400

Telephone: (662) 271-4615-6

Fax: (662) 278-3829

E-mail: dcfthailand@hotmail.com

Year Founded

- ❑ Approved by National Cultural Committee on June 18, 1993
- ❑ Approved by Ministry of Interior on September 23, 1993
- ❑ Announced as Public Charity Organization on June 28, 1999

Mission

- ❑ To promote Thailand's philanthropic and civil society movement
- ❑ To improve economic opportunities and quality of life of the urban and rural poor
- ❑ To network with both local and foreign organizations doing philanthropic work

- ❑ To support good governance through public participation

Program Areas

Thailand's Philanthropic & Civil Society Movement:

- ❑ Strengthen NGOs' fundraising capacity by supporting trainings, workshops and seminars
- ❑ Encourage individuals and corporations to join the philanthropic movement by donating resources for development activities
- ❑ Support the distribution of news and promote the role of NGOs and encourage donations intended for social development
- ❑ Improve existing rules and regulations of government to provide more incentives for donations and to facilitate the work of NGOs

Local Economic Development

Programs:

- ❑ Strengthen capacity to manage development program activities and support human resource development
 - ❑ Promote community business through transfer of business knowledge
 - ❑ Support economic and social development projects at the local level

Local and International Networking:

- ❑ Strengthen ties with government and private local and international funding sources
- ❑ Strengthen ties with both local and international NGOs, private sector and academic networks
- ❑ Encourage an electronic news network as a means of promoting development work

Good Governance through Public Participation

- Promote various activities such as seminars, training and dissemination of knowledge to promote good-governance, social responsibility, and to promote the full participation of the public in determining major policies

Implementation of His Majesty the King's Golden Jubilee Village Pond Project

- Promote His Majesty the King's 'new theory movement' on solving the problem of water shortage for agricultural purposes

Amount of Funds Allocated to Each Project

Not more than 200,000 Baht.

Major Sources of Funding

- Foreign donors – Governments of Japan, U.S., Canada, Australia, Korea
- Business – Shell, Boond Brew, Seagat
- Individuals – Mr. Kamjorn Chavarat

Endowment

Approximately 40,000,000 Baht

Siam Cement Foundation

President: Chumpol Na Lamlieng
Committee & Manager:
Tanitchai Nakasuwan

Address: Siam Cement Road,
Bangsue, Bangkok 10800

Telephone: (662) 586-3415

Fax: (662) 586-3910

Year Founded

Announced to be a public organization according to the Ministry of Finance on October 12, 1992

Number of Staff

Full time employees: 5

Mission

- To support and promote religious program, education as well as all public welfare
- To provide scholarships for Thai scientists and engineers to study concrete and other construction products and research topics

Program Areas

- Providing long term scholarships to poor children
- Promoting human resource development in the areas of science and technology through development of teachers and students
- Providing science and children's projects such as science teacher skill development, summer science camp, training course for children's program development, science workshop, providing scholarships to prominent teachers and youth in scientific field to study in science and technology both home and abroad
- Promoting religious and cultural programs
- Supporting development of healthcare and medicine
- Arranging social activities to improve quality of life of disadvantaged people, including homeless children, vagrants, victimized women, and others

Other Services Provided

None

Nature of Grantmaking Activity, 1999

- ❑ The foundation will provide grants only for educational scholarships that fall within the foundation's objectives.
- ❑ In 1999, there were about 100 requests for scholarship outside the areas of the foundation's objective.
- ❑ There are ten to fifteen major cases amounting to 8,000,000 Baht but only 10 % of them were approved.
- ❑ The foundation does not encourage people to ask for help but emphasizes programs that increase the community's capacity for long-term growth.

Amount of Funds Allocated to Each Project

- ❑ In the case that the foundation is interested in a project, an invitation for more details will be made.
- ❑ Approximately 10 % of the applicants were approved.
- ❑ The annual budget was 49 million Baht before the economic crisis and declined to 29 million Baht with the crisis.
- ❑ The balance was subsidized by the foundation.

Major Sources of Funding (Balance Sheet 1995)

- ❑ Cash in bank, 2,963,879 Baht
- ❑ Cash in financial institutions, 29,710,504 Baht
- ❑ Common shares in Siam Cement, 15,613,110 Baht

After the economic crisis in 1997, the foundation had no income from dividends and smaller amount of interest. An annual income was

reduced to 11-12 million Baht while expenditure was as high as 29 million Baht per year. Siam Cement subsidized all the lost. After the crisis, the dividends fell from 30-35 million Baht per year to 9 million Baht at present. There are donations from minor sources such as the instructor fees donated to the foundation.

Endowment

- ❑ Savings and liquidated assets, 33,228,877 Baht
- ❑ Common shares of Siam Cement, 15,613,110 Shares

Additional Information

- ❑ The foundation still needs support from other civil society organizations and the government.
- ❑ They believe taxes collected from such goods as alcohol and lottery should be used to support community development.
- ❑ Its most important objective is to support activities to stimulate community wisdom.

Toyota Thailand Foundation

President: Police General Pao Sarasin

Address: 186/1 Moo 1, Old Railway Road, Sumrongtai, Prapadang, Samutprakarn

Telephone: (662) 386-1590, 386-1454

Fax: (662) 384-7350, 386-1891

E-mail: ttf@toyota.co.th

Website: <http://www.toyota.co.th/eng/contribution/foundation.asp#>

Year Founded: 1992

Number of Staff

Full time employees: 3

Mission

- ❑ To promote and support all education levels
- ❑ To promote improvements in quality of life and the environment in Thailand
- ❑ To cooperate with other charity organizations for social benefits

Program Areas

- ❑ Providing funds for NGOs and community organizations for training and seminars
- ❑ Building networks and campaigning for NGOs or other communities' activities with the public

Other Services Provided

- ❑ On the occasion of His Majesty the King's 50th Jubilee, the foundation donated 2,000,000 Baht per year to Royal activities annually.
- ❑ The foundation provides assistance for victims of calamities, public health, environmental preservation, and community development.

Nature of Grantmaking Activity, 1999

- ❑ In 1999, there were 200 applicants for financial support and 10 cases were approved.
- ❑ The foundation granted 40% of funds to NGOs and 60% to public universities.
- ❑ Up to 1999, the highest grant allocated by the foundation was about 3,000,000 Baht, which was granted to the Ministry of Public Health and

Mahidol University for a seminar in children's basic ability development, and the lowest one was about 4,000 Baht to a charity fair arranged by civil technicians.

Amount of Funds Allocated to Each Project, 1992-1996

- ❑ **Education**
The foundation has allocated its interest from registered capital of 41.21 million Baht to support philanthropic activities in terms of educational support. The proportion of this fund is as high as 35 % (14,400,000 Baht) for essential projects.
- ❑ **Quality of life and environment**
The foundation has granted 39% of its budget (16,100,000 Baht) for essential projects such as "*I Love Green Vegetables Project*", encouraging children to have more green vegetables, "*Nurse Student Project*" to improve the quality of life of female youths, and "*Water and Life Project*" to promote proper understanding for human and nature to live together in harmony.
- ❑ **Support to public charity organizations**
The foundation granted 26% of funds (about 10,710,000 Baht) to other NGOs such as to the Dr. Sem Pringpuangkaew Foundation to support operating project called "Foster Parents Projects" to help orphans whose parents died from AIDS. The foundation joins with universities holding academic ceremonies by providing scholarships to Master Degree students in engineering at the Institute of Traffic and Transport

Engineering, Chulalongkorn University.

Major Sources of Funding

- ❑ Up to the present, the highest grant the foundation ever received was about 50,000,000 Baht (for capital) and the lowest one was about 10,000 Baht.
- ❑ A major funding source is interest earned on the capital.

Endowment

Accumulated funds of 250,000,000 Baht

Thai-Rath Newspaper Foundation

Chairman: Khun Ying Praneetsilp Vacharaphol

Head: Wichai Pochnukul

Address: 1 Viphavadirangsit Road, Bangkok 10900

Telephone: (662) 272-1030, 272-1314

Fax: (662) 272-1754

Website:

<http://www.thairath.co.th/foundation/mainE.html>

Year Founded

- ❑ Established on December 27, 1979
- ❑ Approved on May 22, 1980
- ❑ Registered as a juristic person on February 9, 1981
- ❑ Approved as a public charity organization on 1999

Number of Staff

Full time employees: 7

Mission

- ❑ To oversee and support 101 Thai-Rath Witthaya Schools
- ❑ To help the public in times of disaster
- ❑ To award the Kampon Wacharapon prize for an outstanding journalistic thesis

Program Area

At present, the foundation has 101 schools in its patronage, with development made for these schools such as improving school buildings.

Other Services Provided

- ❑ Fortifying social participation by urging community leaders and local people to take part in their own community management
- ❑ Conducting research, such as the research project for development of arithmetic studies for primary school students, by using student-centered activity plan
- ❑ Providing scholarships as requested by school committees
- ❑ Providing training to teachers
- ❑ Facilitating learning processes among Thai-Rath Witthaya School teachers

Nature of Grantmaking Activity

- ❑ The size of fund is normally limited but may be reduced in the case of 20-30% of activities.
- ❑ The foundation provides support on equipment such as cloths and books rather than financial aid.
- ❑ Other projects are considered depending on their necessities and number of students.
- ❑ In some cases, schools buy their own equipment and send

receipts to the foundation to ask for reimbursement.

Amount of Funds Allocated to Each Project

Project and budget allocated yearly to Thai-Rath Wittaya schools:

1. Central, 1,000,000Baht
2. Teaching equipment/tools
 - 2.1 Kindergarten school, 500,000 Baht
 - 2.2 Primary school, 500,000 Baht
 - 2.3 Expand educational opportunity, 550,000 Baht
 - 2.4 Music and local art promotion, 300,000 Baht
 - 2.5 Book procurement to library program, 505,000 Baht
 - 2.6 Student uniform program
 - 2.7 Sport equipment
 - 2.8 Exercise book program
3. Academic support
 - 3.1 Lunch project
 - 3.2 Agricultural project for lunch, 404,000 Baht
4. Personnel development
 - 4.1 Meeting of Thai-Rath Wittaya executives, 600,000 Baht
 - 4.2 Arithmetic teacher skills development
 - 4.3 Abroad training for executives and teachers, 800,000 Baht
5. Construction
 - 5.1 Expansion of an opportunity school
 - 5.2 Construction of shortage and emergency buildings
6. Educational leadership
 - 6.1 Scholarship for disadvantaged children and opportunity expanding project, 530,000 Baht
 - 6.2 Kumpon Watcharapon project, 150,000 Baht

Major Sources of Funding

- The main income is from interest at a sum of 340,000,000 Baht per year.
- When the interest rate has fallen, the Thai-Rath Co., Ltd. subsidizes losses.

Endowment

Accumulated funds are about 340,000,000 Baht (these have substantially declined following the director's death).

Additional Information

The foundation largely utilizes its venue and officers from the Thai-Rath Co., Ltd. in performing its operations.

Foundation for Rural Child Development

President: Mrs. Pong Paew Bulakul

Vice-President: Senator Prateep Hata

Advisory Committee:

Senator Meechai Veeravidhya

Prof. Vanchai Vatanasapt

Lady Jantane Suthabuttra

Lady Samornsri Werawan

Committee & Secretary General:

Asst. Professor Wichit Kirdpon Ph.D

Address: 86/22 Ban Non Tan, Moo 3
Potisarn Road, Muang
District, Khonkaen 40002

Telephone: (043) 327-946-7

Fax: (043) 326-968

Website:

http://www.thailife.de/wecare/rcd/index_g.html

Year Founded

Registered as foundation in 1990

Number of Staff

Full time employees: 13

Mission

To develop and promote better quality of life for children and under-privileged communities.

Program Areas

- ❑ Development of a demonstration center for excellence in day care in the Northeast
- ❑ Establishment of an orphanage for underprivileged girls
- ❑ Vocational training for girls in orphanage
- ❑ Youth and parent working skills development
- ❑ Promotion of greater self-reliance through biofertilized agriculture
- ❑ Promotion of community strengthening for increased collaboration and good governance

Nature of Grantmaking Activity

On average, grants are between 1,000,000 and 2,000,000 Baht/year.

Amount of Fund Allocated for Each Project

- ❑ **Scholarships**
On average, allocate 100,000 – 500,000 Baht per year.

Major Sources of Funding

- ❑ Public, 50 %
- ❑ Private sector, 30%
- ❑ Government, 20%
- ❑ Endowment, 500,000 Baht

Endowment

500,000 Baht

Additional Information

The foundation has received wide support from numerous foreign donors. It was recognized as the best foundation working for children in 1995 by the Foundation Council of Thailand.

NGO Coordinating Committee on Development

President: Dech Pumkacha

Address: 409, 3rd floor, Volunteer for Social Foundation Tower, Soi Rohitsuk, Pracharatbumpen 5, Huay kwang, Bangkok 10320

Telephone: (662) 691-1216

Fax: (662) 691-1216

E-mail: tdscthai@asiaaccess.net.th

Year Founded: 1986

Number of Staff

Full time employee: 1

Mission

The Committee does not run the projects itself but act as a central body to coordinate and raise funds for the NGO networks listed below:

- ❑ Children
- ❑ Women
- ❑ Labor
- ❑ Hill tribes
- ❑ Environment and natural resources
- ❑ Human rights
- ❑ Optional agriculture
- ❑ AIDS
- ❑ Urban public
- ❑ Poor urban people
- ❑ Education and support

A total of over 200 NGO networks and volunteers exist.

Activities of the Committee include:

- ❑ Organizing seminars among member organizations (regional and national)
- ❑ Promoting coordination

process, consulting and cooperating with the public and private sectors at all levels (provincial, regional, and national)

- ❑ Coordinating and campaigning in natural resources and development topics
- ❑ Promoting and supporting peoples' assembly to form groups, organizations, and networks
- ❑ Creating public forum for people to make suggestions and exchange their opinions, and information regarding their problems
- ❑ Conducting participatory research to study information systematically and support peoples' organizations for self-problem solving
- ❑ Organizing seminar projects to exchange opinions and information among organizational network people and encouraging NGOs to participate in research to support the self-problem solving

The following are examples of executed activities:

- ❑ Arranging seminars with NGOs, government officers, media, and academic persons to review past lessons learned and set direction for NGOs and peoples' organizations in the next decade
- ❑ Coordinating with TDRI in arranging seminars to set direction and development plan in the 8th economic and social development plan
- ❑ Coordinating with regional networks to conduct draft bills and establish a community development institute

Other Services Provided

The committee is not a source for funding other organizations. However, the committee provides the service of fundraising in cases of requests and arranges meetings between networks and potential sources of funds.

Nature of Grantmaking Activity, 1999

Nearly 100,000 Baht fund was given to the project in 1999.

Amount of Funds Allocated to Each Project

No annual information about fundraising activity has been provided. The largest fund ever raised by the committee was 130,000,000 Baht from Denmark, and the lowest was 5,000 Baht in 1998.

Major Sources of Funding

Major funds were granted totaling 60% by foreign sources and 40% from domestic sources.

Domestic sources:

- ❑ NGO network donations
- ❑ Government Organizations
- ❑ Ministry of Public Health
- ❑ Department of Public Health
- ❑ National Environment Office

Foreign sources:

- ❑ Danish Government
- ❑ UNO
- ❑ Canadian embassy of Thailand's accumulated fund

Endowment

Since the committee was not registered as a foundation, an accumulated fund was not required. The committee earned some 100,000 Baht per year and 400,000 Baht in 1998.

Empower Foundation

Secretary General: Chantawipa Apisuk

Address: 9/12 Soi Phiphat, Silom Road, Bangkok 10500

Telephone: (662) 236-9272
234-0398, 234-3078

Fax: (662) 236-9272

E-mail: empower@mozart.inet.co.th

Year Founded: 1994

Number of Staff

Full time employees: 12

Mission

The foundation divided its activities into two main sections.

1. Women and Prostitution
 - 1.1 Educational Activities
 - ❑ Women's legal rights
 - ❑ Health and social benefits
 - 1.2 Training Activities
 - ❑ Using computers
 - ❑ Boutique Dying
 - ❑ Plays
 - 1.3 Publications
 - ❑ "Empower" Journal
 - 1.4 Network Activities
 - ❑ Prostitution
 - ❑ Domestic and international network
2. AIDS Prevention and Problem Solving
 - 2.1 Educational Activities
 - ❑ Information regarding prevention and healing of AIDS infection
 - ❑ Rights protection
 - 2.2 Training Activities
 - ❑ Art of Understanding AIDS
 - ❑ Leadership training in

AIDS education and living with infected people

2.3 Publications

"Life Leading"

2.4 Network Activities

- ❑ Groups living with infected people
- ❑ Domestic and international networks

Other Services Provided

- ❑ The foundation also produced souvenirs designed by artists and foundation members for sale such as T-shirts, handkerchiefs, cards, shopping bags, price boards, and broaches (ranging from US \$1-7).
- ❑ The foundation established "Honey Bee Special" program in 1989 with a special show by street performers to propagate safe sexual intercourse. It also organized a public show in 1994.

Nature of Grantmaking Activity, 1999

The foundation's policy was to grant aid directly to prostitutes, not to organizations. Aid was classified into four types.

- ❑ Educational scholarships
- ❑ Occupational capital
- ❑ Medical fees
- ❑ Emergency funds

In 1999, the foundation granted a total of 60,000 Baht for educational scholarships. 3,000 Baht each was awarded to six cases, totaling 18,000 Baht. The rest was for medical charges, emergencies and occupational investment.

Fundraising Activity, 1999

- ❑ The foundation raised funds in 1999 and earned 700,000 Baht.

- ❑ In 1998 the foundation building right was transferred at the value of 5,000,000 Baht, excluding the annual income of about 1,400,000 Baht.

Major Sources of Funding

Main supports come from the following foreign organizations:

- ❑ Ford Foundation, USA
- ❑ Ashoka Foundation, USA
- ❑ International Voluntary Services, USA
- ❑ Christian Aid, UK
- ❑ World Health Organization, Switzerland / UN
- ❑ Swizfund, Switzerland
- ❑ World Council of Churches, Switzerland
- ❑ Norwegian Government, Norway
- ❑ Christian Council of Asia, Japan
- ❑ Japanese Embassy to Thailand, Thailand

Funds also come from these domestic sources:

- ❑ Ministry of Public Health
- ❑ Ministry of Labor and Social Welfare
- ❑ Ministry of Education

Endowment

The foundation earned 700,000-800,000 Baht per year with an accumulated fund of about 1,000,000 Baht.

Additional information

Applications for funding from domestic organizations wishing to combat prostitution are rarely approved.

Children's Foundation

President: Sophon Supapong

Address: 95/24 Moo 6, Soi
Kiatruammit, Puttamonthon
4 Road, Kratoomlom,
Sampran, Nakornpratom
73220

Telephone: (662) 814-1481-7

Fax: (662) 814-0369

E-mail: childthai@bangkok.com

Year Founded: 1979

Number of Staff

Full time employees: 130

Mission

The mission of the Children's Foundation is divided into four areas.

1. Educational and Cultural Institute Programs
 - 1.1 Children village school
 - Ban Suan Lad Ya
 - Arsom Semsikalai
 - 1.2 The children foundation's work promotion office
 - Printing office
 - Cultural work, music, and fairy tales
 - Printing service
 - 1.3 Program for homeless children
2. Children's welfare and education institute
 - Ban Tantawan
 - Food for children and community
 - Food for novice and community
3. Children's Institute
 - Project for the propagation of knowledge, propagating knowledge to the community
 - Family Friend Project
 - Love Sharing Project
4. Children's Foundation committee office

- Committee's coordination
- Accounting, Donations Center
- General Affairs and Budget, etc.

Program Areas

- ❑ Supporting children's rights as written in the United Nations Charter on the rights of children
- ❑ Helping abandoned children to have opportunities to develop physically and mentally
- ❑ Promoting children/adult understanding through activities
- ❑ Arranging activities to promote Art, Culture, and Public Welfare
- ❑ Helping and coordinating with individual or groups in educational activities
- ❑ Assisting children and schools through scholarships, educational materials, and other materials
- ❑ Coordinating with NGOs for public benefit

Other Services Provided

- ❑ Herbs for self-dependence project
- ❑ Black May hero relatives project
- ❑ 100 years-anniversary for senior statesman, Preede Panomyong
- ❑ Printing service of Children's Foundation printing office
- ❑ Organizing religious VDO
- ❑ Preserving the environment such as protesting mangrove forest destruction
- ❑ Providing help during disasters such as floods

Nature of Grantmaking Activity, 1999

- ❑ In 1999, there were 8 major applicants asking for support from the foundation.
- ❑ The foundation allocated 100,000-200,000 Baht for major projects and 30-40 minor cases.

Amount of Funds Allocated to Each Project, 1998

The Foundation raised about 40 million Baht from activities in 1998 to be spent in the next fiscal year.

Major Sources of Funding

The foundation received funds from both domestic and foreign sources. Around 75-80% of the fund was from domestic sources.

Domestic sources:

1. Public donations
 - 1.1 Donations
 - 1.2 Ad hoc Donations
 - Forest Robe Presentation
 - Special cases
 - 1.3 Fundraising activity
 - Youth camp
 - Youth funds
 - Training/Seminar
2. Personnel, individual & groups
3. Government sector
 - Ministry of Public Health
 - Department of Social Welfare
4. Business sector
 - Toyota Thailand Foundation
 - Commercial Banks
 - Business organizations

Foreign Sources:

1. Foreign organizations in Thailand
 - PAPRAGE (FRANCE)
 - UNRDVO (JSPSN)
 - TERRE DE VIE
 - ANGRO- THAI AMERICAN
 - GIRLSCOUT
2. Foreign Embassies

Endowment

The foundation's accumulated funds is about 10,000,000 -100,000,000 Baht with an annual income in 1999 of about 40,000,000 Baht.

Additional Information

The main criteria for grant application is that the projects must be transparent, practical, and simple enough to be monitored and evaluated.

Dr. Sem Foundation

Director: Chuchawal
Pringpuangkeo

Address: 255/164 Ban Lormnum,
Moo 2, Tambon
Nongpuang, Salapee
Chiangmai 50140

Telephone: (053) 423862,438017

Fax: (053) 438017

E-mail: semenx@chinagmai.a
net.net.th

Website:

<http://www.cmnet.co.th/drsem>

Year Founded: 1995

Number of Staff

11

Mission

To help AIDS-infected families in the North by looking after infants, both HIV-infected from their parent and not infected, whose parents have died from AIDS or who are HIV-infected and therefore unable to earn income.

Program Areas

- Educating and training children so that they can depend on themselves

- Educating people in the community to understand about the disease, to learn how to prevent it and how to live a normal life with infected victims
- Training teachers to deals with topics relating to AIDS
- Teaching sanitation methods to children, parents and their families
- Coordinating and cooperating in a tripartite manner among community, government agencies, and NGOs
- Preventing and seeking solutions to child-related problems such as drug abuse, homeless children, hunger, and child prostitution

Other Services Provided

- Training and educating children in farming skills and at the same time conserving and respecting nature, forest and water resources
- Inculcating children to traditional Thai regional cultural values and raising awareness of the need to preserve them

Nature of Grantmaking Activity, 2000

- Grants were all in the form of scholarships to Northern children in 2000.
- A total of 630 scholarships totaling 3,397,000 Baht were awarded.

Amount of Funds Allocated to Each Project, 1999

Fund can be divided into two main types:

- Fund for projects in six northern provinces for a total of 1,317,316 Baht
- Funds granted as 636 scholarships, amounting to 3,097,000 Baht from the

received amount of 4,414,316 Baht

Major Sources of Funding

Domestic sources:

- ❑ Ministry of Public health
- ❑ Savings Bank of Thailand
- ❑ Toyota Thailand Foundation
- ❑ AIDS NET
- ❑ General Public

Foreign sources:

- ❑ UNICEF
- ❑ Foreigners -- Singapore, Japan, England, Australia, The Netherlands, USA, Hongkong and Germany

Endowment

- ❑ The foundation earned accumulated funds in the 1998 fiscal year at the amount of 7,229,992.89 Baht.
- ❑ Current assets are 5,356,473.89 Baht.
- ❑ Land, Buildings, and Vehicles, amount to 1,859,582.00 Baht.
- ❑ Other Assets amount to 29,495,55 Baht.

The total is 7,245,551.44 Baht.

Additional Information

As donations to temples are more popular than to other charities as a means to support the disadvantaged, the foundation will coordinate with the temples regarding fund mobilization.

Seub Nakhasathien Foundation

Manager: Nittaya Wongsawat

Address: 50 Kasetsart Alumni Association Tower, Pahonyotin Road, Ladyao, Chatuchag, Bangkok

10900

Telephone: (662) 561-2469-70

Fax: (662) 561-2470

E-mail: seub@internetksc.th.com, snf@seub.or.th

Website: <http://www.seub.or.th>

Year Founded: 1990

Number of Staff

Full time employees: 8

Paid volunteers: 2

Paid volunteers: 300

Mission

- ❑ To protect natural resources, forest, and wildlife, especially in the western part of Thailand
- ❑ To conserve the forest and wildlife in the Thung Yai Naresuan and Huay Kha Khaeng wildlife sanctuaries
- ❑ To improve the welfare and morality of officers in conservation forest areas in order to enhance their working performance
- ❑ To campaign for the conservation of the nation's forest as a natural resource
- ❑ To propagate and increase awareness among Thai people on the conservation of natural resources, wildlife and biological varieties

Program Area

Conservation of forest and natural resources

Other Services Provided

- ❑ Youth training programs in environment protection (Khlung Wangchao)
- ❑ Teacher training programs on techniques and natural processes
- ❑ Art and Environment Exhibition "*Forest and town are alike*"

Nature of Grantmaking Activity, 1996

- ❑ Regarding the conservation of Huay Kha Khaeng, Thung Yai Naresuan, and other conservation areas, the foundation granted a total of 1,000,000 Baht in 1996.
- ❑ Within this amount, 60,000 Baht was given to support families of dead officers and 65,000 Baht to pay for the education of children of these officers.

Major Sources of Funding

Domestic sources:

- ❑ Public contributions
- ❑ Interest earned on the endowment
- ❑ Donations from businesses (Wiriya Insurance Co., Ltd.)
- ❑ Income from different activities (concerts, greeting cards, brochures)

Foreign sources:

- ❑ The Netherlands Committee for the World Conservation Union (IUCN)
- ❑ Royal Netherlands Embassy's Office of the Agricultural Counselor
- ❑ United Nations Development Program (UNDP)

Endowment

In 1995, the foundation earned an accumulated capital of 26,804,582.94 Baht and 29,562,833.55 Baht for total assets as follows.

- ❑ Current assets, 28,231,844.64 Baht
- ❑ Other current assets, 1,113,743.82 Baht
- ❑ Land, Building & Accessories, 217,245.09 Baht

Additional Information

- ❑ The foundation provides information through the following means:
 - Leaflets
 - Sixth report for the Seub Nakasathien foundation
 - 1999-2002 Seub Nakhasathien foundation strategy
 - Seub Journal
- ❑ The foundation earned an annual income of 2,900,000 Baht in 1998.

Development Support Consortium

Executive Director: Kanchit Sukjaimitr

Address: 97 Soi Pahonyotin19/1, Pahonyotin Road, Ladyao, Chatucha Bangkok 10900

Telephone: (662) 511-3096, 930-2140

Fax: (662) 930-2141

E-mail: dsc@loxinfo.co.th

Website: <http://www.thaingo.org/eng/>

Year Founded: 1996

Number of Staff

8

Mission

- ❑ To raise funds
- ❑ To build coordination between organizations in raising funds to support social development activities

Program Areas

- ❑ Earning income as well as mobilizing funds from international donors and domestic sources including

- private business and government sectors
- ❑ Coordinating and organizing fundraising activities to provide grants to NGOs
- ❑ Strengthening the fundraising potential of NGOs through workshops and other training activities

Other Services Provided

- ❑ Establishing an information center for fundraising and development
- ❑ Mobilizing resources from the government, public sector and foreign donor agencies to support development in Thailand
- ❑ Collaborating with business sector to support development in Thailand
- ❑ Advocating activities leading to changes in laws and regulations related to civil society organizations to enable them to raise funds and maintain sustainable management
- ❑ Using media such as newsletters and web sites to propagate organizations and units to enable the public to understand the work of NGOs

Other Services Provided

Training

- ❑ To send personnel overseas to have training on fundraising, organizational management and to share knowledge and experience gained to Thai NGOs
- ❑ To hire instructors from the Philippines to conduct training in Thailand in different aspects of CSO development

Research

- ❑ To conduct research on fundraising

- ❑ To propagate information to government sector, business sector and NGOs

Nature of Grantmaking Activity

As the association is not registered, the association does not provide grants to other organizations or individuals.

- ❑ Future support is in the form of granting aid to NGOs, community leaders, as well as providing credit to organizations and individuals for development purposes.
- ❑ In 1997, the highest grant received from a foreign fund was 10,000,000 Baht, plus 3,000,000 Baht from public contributions and 4,000,000 reserved as a credit for loan to NGOs.

The association has several plans for fundraising as follows:

- ❑ Direct donations to the association office
- ❑ Fundraising activities/events
- ❑ Invitations from media
- ❑ Project proposals to donors
- ❑ Selling goods

Major Sources of Funding

- ❑ Major supports are from foreign agencies such as NGOs in the USA, Japan, the Netherlands, and Europe.
- ❑ Domestic funds are from government offices and the public.

Endowment

15,000,000 Baht

The Education for Development Foundation (EDF)

Manager: Sakon Sookkho

Address: Kasetsart University Alumni Building, 3rd Floor
50 Paholyothin Road,
Ladyao, Jatujak
Bangkok 10900

Telephone: (662) 940-5265,
940- 5925, 940-5988

Fax: (662) 940-5266

E-mail: admin@edfthai.org

Website: <http://www.edfthai.org>

Year Founded: 1987

Number of Staff

17

Mission

To provide scholarships to poor students in secondary schools, high schools and vocational schools in the Northeast (19 provinces).

Other Services Provided

- Helping youth to develop their skills, confidence and means to support families and communities in areas such as accounting and sewing through a training program on the Japanese abacus and various school projects
- Providing educational activities for youth in 19 northeastern provinces through donations and support for uniforms and jackets, gifts, stationery and other learning accessories
- Helping youth to know how to utilize existing resources to develop communities

Nature of Grantmaking Activity, 2001

- The foundation has granted aid in the form of 3 year continuing without condition scholarships by the amount of 2,000 Baht/year/student
- In 2001, the foundation provided a total of 16,030 scholarships totaling 24,345,000 Baht

Amount of Funds Allocated to Each Project, 2001

In 2001, EDF raised funds in the amount of 32,000,000 Baht. The annual income of approximately 24,000,000 Baht was deposited in bank accounts and 75% was allocated as scholarships. The remainder was used for other projects such as Abacus Training, Women's Group Training, and Income Generating Project.

The foundation undertakes the following fundraising activities:

- Distributing donation boxes in communities both in Bangkok and up-country
- Official website
- Mass media such as newspaper and pamphlet
- Direct marketing

There are three types of scholarships:

- Type A is a three-year scholarship given to a student at a sum of 6,000 Baht
- Type B is a continuous scholarship given to a student annually in the amount of 2,000 Baht
- Type C is a one-year scholarship given to a student in the amount of 2,000 Baht

Major Sources of Funding

- ❑ Minsai Center Japan
- ❑ Japanese companies in Thailand
- ❑ Thai companies and individuals

Domestic sources:

- ❑ Companies
- ❑ Thai and Japanese individuals
- ❑ Interest earned on endowment

Foreign sources:

- ❑ Private companies in Japan and U.S.
- ❑ Japanese and American individuals

Endowment

The average accumulated fund is about 20,000,000 Baht per year.

Local Development Institute (LDI)

President: Dr. Sa-nguan
Nittayarumpong MD

Address: 693 Department of
Medical Sciences,
Building 2, 2nd floor,
Bamrung Muang Road,
Pomprab, Bangkok 10100

Telephone: (66-2) 621-7810-2

Fax: (66-2) 621-8042-3

E-mail: LDI@loxinfo.co.th

Year Founded: 1981

Number of Staff

Full time employees: 7

Unpaid volunteers: 10

Project officers: 18

Mission

To strengthen the capacity of local rural community and civil society.

Program Areas

Building opportunities for local communities and involving them in local development by focusing on the following areas:

- ❑ Providing grants for NGOs
- ❑ Conducting research (including action research)
- ❑ Compiling and disseminating information
- ❑ Policy advocacy

Other Services Provided

- ❑ Bridging and networking among NGOs and community organizations
- ❑ Providing technical assistance/consultation such as training courses for NGOs and community organizations
- ❑ Supporting activities directed by NGOs and community organizations

Nature of Grantmaking Activity, 1991 – 1998

A hundred NGOs and community organizations applied and received grants from the institute.

Amount of Funds Allocated to Each Project

- ❑ 50% of the total fund from CIDA or 76,265,827 Baht was given directly to support NGOs and villager groups across the country
- ❑ 10%, or 15,286,664 Baht, was applied for research and information dissemination.
- ❑ 30%, or 45,000,000 Baht, was applied for loans for community businesses.
- ❑ 3.5% was for compiling disseminating information to the public.

Major Sources of Funding

During 1991-1998, LDI received a largest amount of the 151,000,000 Baht from the Canadian International Development Agency (CIDA), while the smallest amount was 300,000 Baht.

In 1998, the annual budget of the institute was 70,000,000 Baht received from the following sources:

- ❑ NESDB, 2,000,000 Baht (1998-99)
- ❑ Ford Foundation, 7,790,000 Baht (1998-2000)
- ❑ Office of Narcotics Control Board, 3,900,000 Baht (1998)
- ❑ CAGIN/Ford Foundation/Krung
- ❑ GTZ, 300,000 Baht (1998)
- ❑ Thailand Environment Fund, 4,900,000 Baht (1996-99)
- ❑ Japan Foundation, 600,000 Baht (1998-99)
- ❑ Ministry of Public Health, 20,000,0000 bath (2002)

Endowment

Accumulated funds are in the range of 30,000-000 Baht.

Kenan Institute Asia

Chairman: Mr. Anand Panyarachun

President: Prof. Dr. Montri Chulavatnatol

Executive Director: Mr. Paul Wedel

Address: Sirikit National Convention Center, 2nd Floor, Zone D, Room 201/2, 60 New Rachadapisek Road, Klongtoey, Bangkok 10110

Telephone: (66-2) 299-3131,

229-3132, 229-3136

Fax: (66-2) 229-3130

E-mail: kiasia@kiasia.org

Website: <http://www.kiasia.org>

Year Founded: 1996

Number of Staff

Full time employees: 68

Paid volunteers: 6

Mission

To build cooperation and partnerships among government, business and academia and between the United States and Asia in order to:

- ❑ Promote better business practices for good governance and competitiveness
- ❑ Enhance the roles of public and private enterprises in addressing environmental issues
- ❑ Facilitate the development of information communication technology with particular attention to bridge the digital divide
- ❑ Build capacity in human resource development in support of sustainable economic and social development in Asia

Program Areas

- ❑ Providing subsidized management consulting to small and medium-sized enterprises
- ❑ Supporting partnerships for development between US and Asian organizations, especially in environment, public health and education through information, facilitation and small grants
- ❑ Providing financial support and organization for training courses in business management, environmental

management, public health and good governance

- ❑ Researching 'digital divide' and infrastructure development issues

Other Services Provided

- ❑ Organizing the annual "Kenan Conference" on development strategies
- ❑ Organizing and supervising study abroad programs in Thailand for U.S. universities

assistance of U.S. corporations active in Thailand to support a program of human resource development called, "*American Corporations for Thailand*". Later, the U.S. government channeled development funds through KIAAsia for a project called, "*Acceleration Economic Recovery in Asia (AERA)*" which was set up in 1999.

Endowment

The accumulated endowment fund is about U.S. \$10 million.

Nature of Grants Making Activity, 1999

Most financial support was for training and partnership formulation.

Amount of Funds Allocated to Each Project, 1999

- ❑ 65% of the total fund was financial support given to other organizations for training and visiting
- ❑ 80% was for private organizations
- ❑ 20% was for public organizations.
- ❑ The largest amount ever granted was 4.5 million Baht. The smallest was 5,000 Baht for a trainer of a small training course.

Major Sources of Funding

Domestic Sources:

- ❑ Development Cooperation Funds, 30%
- ❑ Private Corporations, 20%
- ❑ Endowment, 30%
- ❑ Service fees, 20 %

Foreign Sources:

- ❑ U.S. government, 85%
- ❑ U.S. private agencies, 15%

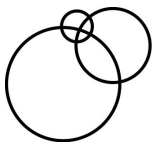
After the economic crisis in 1997, Mr. Anand Panyarachun, former Thai Prime Minister, requested the

About Synergos

Synergos and its partners mobilize resources and bridge social and economic divides to reduce poverty and increase equity around the world.

Our goals are to:

- Increase the capacities and resources of African, Asian, and Latin American philanthropic and social investment organizations to reduce poverty and increase equity
- Increase the amounts of private resources brought invested by individual philanthropists and social investors in efforts to reduce poverty and increase equity in Africa, Asia and Latin America
- Increase the number of new collaborative initiatives across national and global divides among business, government and civil society actors to reduce poverty and increase equity.



The Synergos Institute

9 East 69th Street
New York, NY 10021 USA
Tel +1 (212) 517-4900
Fax +1 (212) 517-4815
synergos@synergos.org
www.synergos.org