



GPC 2009 Learning Visit to East Africa (Kenya and Tanzania)

The Global Philanthropists Circle Learning Journey will start in urban Nairobi, Kenya, and end in Arusha, Tanzania's newest city. The agenda will expose participants to innovative approaches addressing poverty and inequality in East Africa. Site visits will highlight micro-franchise and finance, land conservation, sustainable subsistence and commercial agricultural farming.

We will visit with a number of organizations, some supported by GPC members and Synergos' Senior Fellows, and with the Green Belt Movement, founded by Wangari Maathai, Nobel Peace Prize Laureate, who will lead a conversation on climate, and the wellbeing of children, women and girls.

The Learning Journey will also incorporate time and activities that will encourage participants to deeply reflect on their personal purpose as philanthropic leaders; engage in informal exchanges with local philanthropists and leaders in business, government, and NGO sectors; and explore opportunities for collaborations and/or partnerships.

Trip Agenda

Saturday, February 28 – March 1

Arrivals: Kenya -Nairobi-International Airport (NBO)
Participants will be picked up at the airport by a Synergos representative.
Please look for the **Synergos sign** at the airport (after you've picked-up your baggage)

Check-in: **Nairobi Serena Hotel**, Kenyatta Avenue, Phone: 254-2272-5111

Sunday, March 1: Nairobi

11:00 – 1:00 Welcome brunch and Orientation

- Getting to know each other - What we hope to learn and our expectations
- Review of the trip agenda and goals; reflection tools and exercises; logistics; Q & A
- **Overview of Kenya - Presentation by Mary Nyamongo**, Synergos Senior Fellow
 - Suggested readings: Kenya Overview; articles: "Kenya NGOs a need to cooperate" and "When not imploding is not enough"

1:30 Break - at your leisure, or an optional "Sight of Nairobi" tour -- this tour provides an overview of Nairobi, from its historical roots to its modern day urban life. Highlights include artisanal market, parliament buildings, and the National Museum
Return to the hotel by 3.30pm

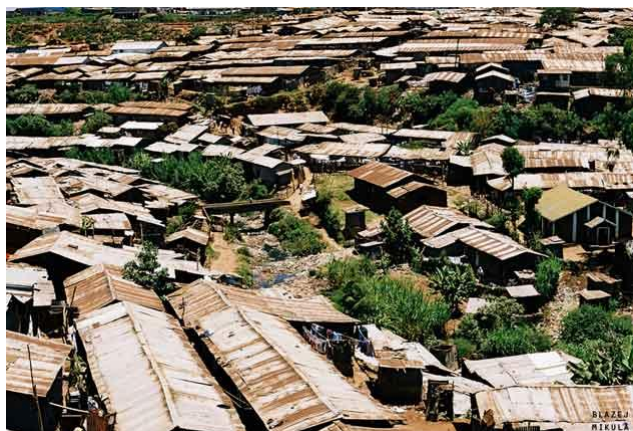
6:30 - 8:00 Dinner at the hotel

Monday, March 2: Nairobi

8:00 – 9:15 **Breakfast:** Debrief with Leela Mulukutla, Country Director of International Medical Corps and with Agostinho Neto Oyugi, Program Coordinator of the Constant Gardner Trust

9:30 **Leave hotel for site visit**

10:00 – 12:00 **Kibera Slums, hosted by International Medical Corps**
Themes: Urban poverty; pre-and-post conflict interventions; relief services; health; water, HIV/AIDS; and microfinance
Suggested readings: “Say you are one of them” and “Orphaned by Kenya poll violence”



Kibera is the second largest slum in Africa, home to close to a million people, located in the southwest of Nairobi city centre. The combination of poor nutrition and lack of sanitation accounts for many illnesses. Not only are death by disease and conflict common inside this slum, but it is estimated that 1/5 of the 2.2 million Kenyans living with HIV live in Kibera.

International Medical Corps

(www.imcworldwide.org) has worked in Kibera for years, treating TB patients and assisting HIV positive mothers. It is one of the first agencies to provide basic health services to the extremely poor slum population that has been held in a grip of lawlessness, violence, and crime since the election – the reason why many humanitarian NGOs struggle to deliver services here. I.M.C. will guide us on a tour and introduce us to their collaborative partners, including organizations like **Jamii Bora** (www.jamiiabora.org/missionvision.htm) and **Carolina for Kibera’s Binti Pomoja program** (<http://cfk.unc.edu/>) and **The Constant Gardner Trust**.

12:30 - 2:30 **Lunch and informal roundtable discussions with community and other multi-sector leaders working in Kibera:** Catholic Relief Services; Ford Foundation; HIVOS; KCD Foundation; Kenya Gatsby Trust; Mapendo International; Millennium Promise; Ministry of Health; TechnoServe; and the UN-Habitat

3:00 – 4:00 **Return to the hotel – debrief and reflection at the hotel gardens**

6:30 **Leave the hotel for dinner**

7:00 **Dinner – Special Guests – Restaurant TBD (semi-formal- no jeans)**

Tuesday, March 3: Thika & Yatta – (1½ hrs from Nairobi)

- 8:00 – 8:45** **Breakfast debrief with Charles Mulli, founder and ED of Mully Childrens Family**
- 9:00** **Depart hotel**
- 10:30 – 12:00** **Site Visit – Mully Children’s Family (www.mullychildrensfamily.org)**
Themes: Orphans and vulnerable children; sustainable agriculture; health; and life skills training
Suggested reading: “The care of orphans and vulnerable children in Kenya: a cost effectiveness analysis.”
M.C.F. is a place called “home” for street children, orphans, abandoned, abused, HIV/AIDS affected and infected, desperate and neglected children, regardless of their religion, sex, color or tribe. Through the support of **GPC Member Steve Killelea**, M.C.F. is working toward its goal of becoming self-sufficient by integrating sustainable and commercial agricultural practices, fish-farming, and by generating income through its vocational training programs
- 12:00 - 1:30** **Lunch in Thika**
- 2.30 – 4:30** **KickStart (www.kickstart.org)**
Themes: agriculture, technology, wealth creation, and water
KickStart is a non-profit social enterprise that transforms the lives of poor farmers in Africa through the design, manufacture and sale of low-cost capital equipment such as its MoneyMaker irrigation pump. Small-scale farmers who have made the investment in a KickStart pump, have been able to develop profitable businesses and improve the livelihoods of their families. Since their inception in Kenya in 1991, KickStart has expanded its unique social entrepreneurial model to Tanzania and Mali, and it estimates that it has created 65,000 enterprises and moved over 300,000 people out of poverty.
- 5:00** **Head back to Nairobi**

(Dinner at Leisure)

Wednesday, March 4: Heading to Muranga (1 hour away from Nairobi)

- 8:00** **Check-out from the Hotel**
- 8:30 – 9:30** **Breakfast Discussion led by Anne Marie Burgoyne, Portfolio Director, Draper Richards Foundation (www.drapperrichards.org): “Who are the dedicated leaders making social change in Kenya? How are they supported in their work?”**
Suggested reading: “What is a Social Entrepreneur?”
- 9:45** **Leave the hotel for site visits**
- 10:30 – 11:30** **Children and Family Wellness Shops (www.cfshops.org)**
Themes: micro-franchise, providing access to health
C.F.W. is a project of The HealthStore Foundation which uses a for-profit business model, micro-franchise, to distribute essential life-saving drugs to marginalized populations in urban and rural areas. Since the opening of the first clinics and shops in April 2000, the CFW Shops network has 65 outlets and continues to pursue an agenda of rapid expansion.

12:15 – 1:30 **Green Belt Movement - Green Belt Movement** (www.greenbeltmovement.org)
Themes: environment challenges; climate change agenda; wellness of women and girls
G.B.M. not only empowers millions of rural women through the planting of trees which generates income, but it also builds the community’s capacity, and simultaneously promotes increased engagement in civic processes, better governance and a culture of peace. We will visit a community in Muranga where G.B.M. has been working for over 20 years.

2:00 – 3:00 **TechnoServe** (www.technoserve.org)
Themes: agricultural business development; entrepreneurs; finance and global market access
Suggested reading: Kenya: agriculture and economy; Article: “Major Grant for TechnoServe to Double Coffee Incomes of Small-Scale Farmers in East Africa”
TechnoServe is leading a movement that empowers people in the developing world to build businesses that break the cycle of poverty. Agriculture is a mainstay of Kenya's economy, and there is growing demand for tropical fruits and other farm products in urban areas within the country and overseas. But many rural residents struggle to support their families, lacking the means to effectively cater to these thriving markets. Across a number of industries, TechnoServe is working with agri-businesses and directly with farmers to help them reach their potential.

3:15 **Departure for Nanyuki (2 hours from Muranga)**
Reflection throughout travel time

5:45 **Check into Hotel – spending two nights**
Serena Sweetwaters Tented Camp
Nanyuki, Kenya
Telephone (254 62) 31970
www.serenahotels.com

7:30 **Dinner and reflection**

Thursday, March 5: Nanyuki

8:00 – 8.30 **Yoga/Walking Meditation**

8:30 – 9:15 **Breakfast**

9:30 – 3:30 **OI Pejeta Conservancy** (www.olpejetaconservancy.org)
Themes: inclusive partnerships; conservation; environmental preservation; and community empowerment
Dress code: Long sleeve shirts and jeans/pants, sturdy shoes/sneakers, hats, and sunscreen
The OI Pejeta Conservancy is a model for wildlife conservation. It engages the surrounding communities and shares tangible social and economic benefits at both the local and national level. Through the support of **GPC Member Jon Stryker** the OI Pejeta Conservancy is a 90,000 acre wildlife reserve situated in the foothills of the magnificent snowcapped Mount Kenya. The Conservancy is the home of the Sweetwater’s Chimpanzee Sanctuary and boasts a variety of animals, including the endangered black and white rhino, leopard, elephant, buffalo and lion.

6:30 **Dinner and Cultural Event**

Friday, March 6: Nanyuki – Nairobi – Arusha

- 8:00 Checkout from Hotel
- 8:15 Breakfast + (Boxed Lunches)
- 9:15 Depart for the airport
- 11:40 Flight from Nanyuki to Nairobi - Jomo Kenyatta Airport (estimated time 45 minutes)
- 1:00 Flight from Jomo Kenyatta to Arusha- Kilimanjaro Airport (estimated time 45 minutes)
- 2:30 **The School of St. Jude** (www.schoolofstjude.co.tz) – USA Campus
Theme: education as an intervention to fight poverty

St. Jude is fighting poverty through education. All of its 1,000+ students come from the lowest socio-economic backgrounds in Arusha. The school blends the best of Western and Tanzanian instructional methods to instill critical thinking and achieve academic gains. St. Jude's students are positioned to become future leaders and builders of Tanzania. Through the support of **GPC Members Helen and Gordon Smith and their family**, St. Jude has opened its doors to a second campus.



- 3:45 Home visit tours with students and staff
- 5:30 Check-in at Serena Mount Village Lodge (www.serenahotels.com)
- 6:00 – 6:40 Debrief & Reflection with Peggy – (Kenya experience)
- 6:45 Depart for Rivertrees Restaurant
- 7:30 **Dinner hosted by The Smith Family:** A discussion moderated by Synergos, and led by **the Smiths and Bergmans** on their experiences around partnerships in Tanzania.

Saturday, March 7: Arusha Town

- 9:00 – 9:45 Reflective meditation walk/yoga led by Peggy - hotel grounds
- 10:00 – 11:30 Breakfast at Serena Mount Village
- 12:00 – 2:00 **Miracle Corners of the World** (www.miraclecorners.org)
Theme: Youth leadership and community development; Technology and English classes
Miracle Corners is a non-profit organization that empowers youth to become positive agents of change, to improve their lives and contribute to their communities. Through the vision and support of **GPC Member Eddie Bergman and his family**, M.C.W. has established two community

centers in Arusha and Songea, Tanzania. These Centers are financially self-sufficient and run by community leaders

- 2:00 – 4:30** **Workshop presentation by the Tanzania Gatsby Trust** (www.gatsby.org.uk) - at Miracle Corners
Theme: microfinance, value-chain analysis, women and sustainable livelihoods
The T.G.T. headed by **Synergos' Senior Fellow, Olive Luena**, operates on the premise that there is an underlying productive potential in the informal enterprise sector, which is yet to be mobilized. This is reflected in the high rates of unemployment, under-employment and low earning income of Tanzanians. The workshop will be an interactive forum where rural women will showcase their products, talk about the impact of the loans and business development training, connections to local and national markets, and improvements in their livelihoods
- 5:00** **Leave Miracle Corners for Dinner – Flame Tree Restaurant**
- 6:30** **Official Closing & Dinner hosted by The Bergman Family**

Sunday, March 8: Day Trip: Safari to Arusha National Park (signed-up participants)

- 8:00** **Breakfast**
8:45 **Depart hotel for Arusha National Park**

Participants Checking-out

- 9:30** **Breakfast**
11:00 - 12:00 **Hotel Checkout**
2:00 **Airport transfers**

Monday, March 9: Departures

- 9:00** **Breakfast**
12:00 **Hotel Checkout**
1:45 **Airport transfers (3 guests) Kilimanjaro Airport to Nairobi**
 Departure: 3:40PM
 Arrive: 4:30PM